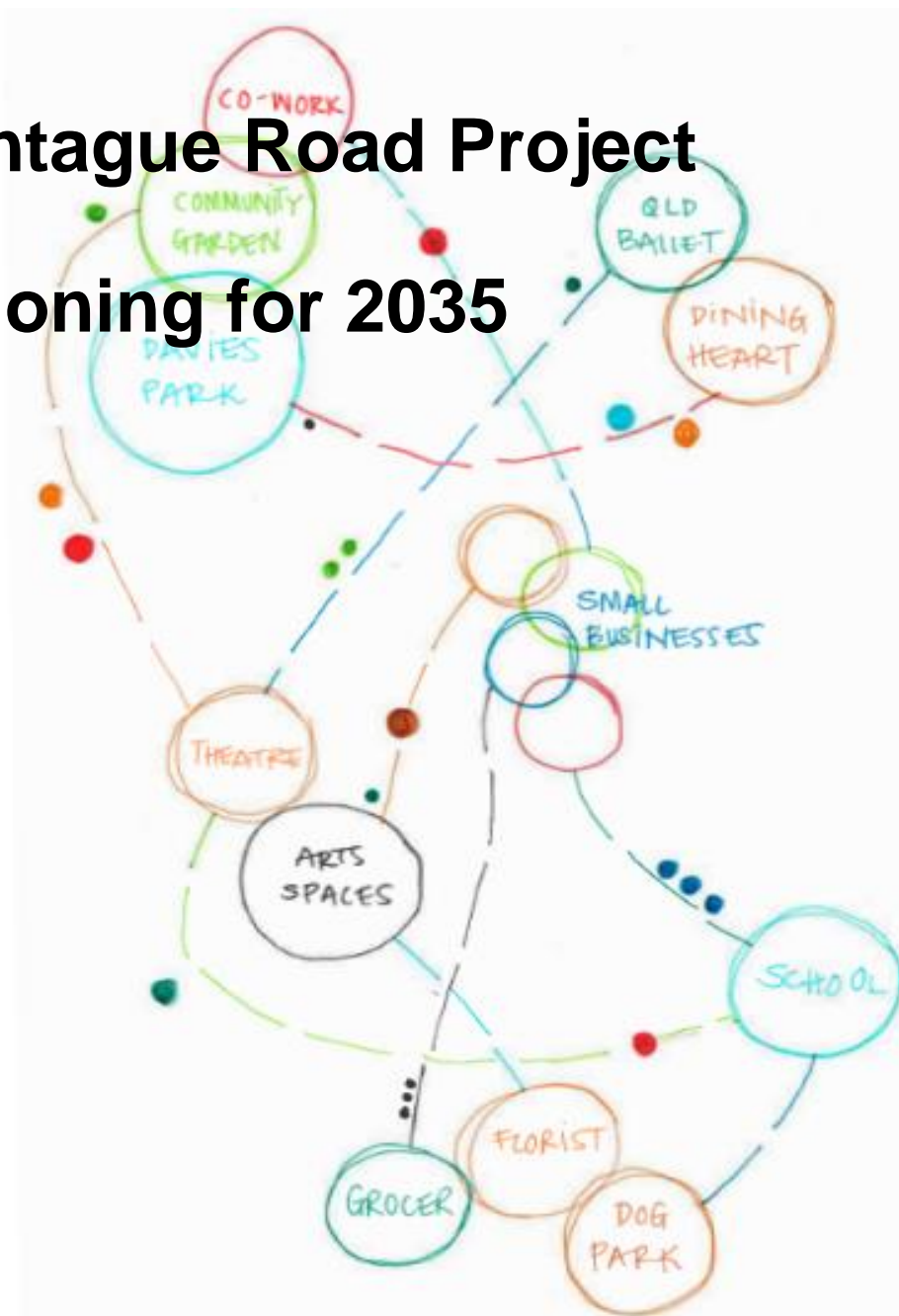


# Community Engagement Report

March 2023

## Montague Road Project Visioning for 2035



## **ACKNOWLEDGEMENT OF COUNTRY**

In the spirit of reconciliation the Montague Road Project acknowledges the Traditional Custodians of country throughout Australia and their connections to land, sea and community. We pay our respect to their Elders past and present and extend that respect to all Aboriginal and Torres Strait Islander peoples today.

We also acknowledge the valuable contribution they have made and continue to make to the cultural landscape of this country.

*This document has been prepared by Montague Road Project, in partnership with Kurilpa Futures and Queensland Ballet. All information herein is understood to be correct and is published in good faith.*

## Contents

Executive Summary .....	5
Introduction .....	6
Purpose of this Report .....	6
Project Description.....	7
Purpose of participation .....	8
Principles that guided us.....	8
Limitations .....	8
How we collected community data .....	9
How we reached out.....	10
Online engagement.....	11
Montague Road Project website .....	11
Montague Road Project Facebook and Instagram .....	11
Our local newspaper: “The Westender” .....	11
Face-to-face engagement activities.....	12
Pop Ups .....	12
Doorknocking .....	12
Guided local history walks along Montague Road.....	12
Guided local planning walk and presentation - UQ Planning students .....	13
Face-to-face meetings.....	13
Final Engagement Metrics .....	14
Who Participated .....	15
At the Forum .....	15
In the Survey .....	15
What we heard .....	19
Pop Ups .....	19
Community Survey.....	19
Three words to describe ideal vision .....	19
Shaping Character and Identity .....	22
Other issues to consider in future planning.....	23
Community Forum .....	24
Movement Theme Summary .....	25
Culture Theme Summary .....	26
Greening and Caring for Country Theme Summary.....	27
Home Theme Summary .....	28
Work and Education Theme Summary .....	29

Climate Theme Summary.....	30
Community Theme Summary .....	31
Next Steps .....	32
Conclusion.....	32
Acknowledgements.....	32
APPENDICES .....	33
Appendix A – Survey Tool .....	33
Appendix B - Forum Outline.....	35
Appendix C - List of Pop-Ups.....	36
Appendix D – Doorknocking conducted .....	37
Appendix E – Survey Responses: Participant Demographic details.....	37
Appendix F – What We Heard: Pop Ups .....	40
Appendix G – Survey Responses: Vision .....	40
Appendix H – Survey Responses: Character and Identity.....	41
Appendix I – Survey Responses: Issues to consider for the planning .....	41
Appendix J - Forum Individual Big Ideas Grouped by Theme .....	42
Appendix K – World Café Data by Persona .....	44
Appendix L - Forum World Café ideas collated by theme .....	50
Appendix M - Forum Scenarios by Theme.....	54
Appendix N – Forum ‘Exemplars’ Final Synthesis Group Work .....	56
Appendix O – Big Ideas submitted to Inner Spark .....	59

# Executive Summary

The Montague Road Project is currently a partnership between Kurilpa Futures and Queensland Ballet. The project aims to empower residents, visitors and local businesses to contribute to shaping the future of the Montague Road precinct in partnership with government and designers.

This is a community engagement report on the 'community-led' engagement process undertaken in August and September 2022 to create a positive vision for the future of the Montague Road precinct.

This *Engagement Report* is a companion document to the *Montague Road Vision 2035* and they are published together for the local community and businesses and for all tiers of government and the urban design community.

This report documents how we approached community, who participated and what we heard.

To balance the reach and depth of engagement, a two-pronged approach was adopted with a survey asking for a few minutes of people's time and then a day-long forum to enable a more deliberative dive into blue sky dreaming.

The community survey attracted 1018 participants and 60 people participated in the forum. The report shares some demographic information about participants to allow the reader to see for themselves that the project achieved a strong level of participation in both the survey and the forum.

The project received hundreds of ideas from local residents, businesses and visitors for the future of the Montague Road precinct. The ideas ranged across themes, both small and large. The section below *What We Heard* (p19) summarises these ideas by theme and, for transparency, the raw data is found in the Appendices.

As a snapshot of what we heard, here are the top vision words collected. As this was an early question in the Survey, the answers were given freely without 'priming' from prior questions:

**Safe green traffic friendly pedestrian trees community bike space**

This report documents what we heard at the Forum under each of the following themes:

**Movement, Greening and Caring for Country, Culture,  
Home, Work, Climate, Education and Community.**

The coming companion *Vision 2035* document will seek to **synthesise** these themes, drawing all the survey and forum data, into an inspiring vision with broad pillars that will encompass streams of work needed to achieve the vision.

The project has connected residents along both sides of Montague Road from Queensland Ballet to Queensland Theatre which should serve as a strong basis for the future.

# Introduction

## Purpose of this Report

This Report, ***Community Engagement Report, Montague Road Project, Visioning for 2035***, documents the community engagement undertaken by the Montague Road Project to develop a vision for the future of Montague Road and its precinct.

As such, it is intended to make transparent the approach taken to our public participation, how we approached community and businesses, who participated and what we heard.

It summarises and documents the raw data collected and is the evidence base for the ***Montague Road Community Vision 2035*** also now available on the Montague Road Project webpage.

The two documents together will serve as a resource for government and the urban design and development sector going forward locally.

We expect that, along with local community and businesses, readers of this report will include all levels of government, developers, urban and visual designers, planners, landscapers, architects and engineers.

The documents can be considered as a starting point for engagement with local communities and businesses at the conception stages of future local development and infrastructure projects. However, of course, they are not a substitute for community engagement at precinct or project specific levels.

The engagement process has revealed an eagerness among the public to participate in helping shape their local environment.

## Project Description

Kurilpa Futures and Queensland Ballet formed the Montague Road Project in early 2021 in response to the Ballet's development of the heritage Thomas Dixon Centre, Montague Road to build the associated 351-seat Talbot Theatre in Drake Street.



The Thomas Dixon Centre first opened its doors in 1908 as a shoe factory. *Historical imagery courtesy of State Library Queensland.*

The Montague Road precinct had grown substantially with many apartment blocks built, housing thousands of people, with many more still under construction and planned.

There was a widespread unspoken perception that it was time to turn attention to the requisite level of local infrastructure, green assets and community and cultural development.

The transformation of the Thomas Dixon Centre, home of the Queensland Ballet, was well underway by early 2021. As part of their refurbishment of the heritage listed Thomas Dixon Centre to house their dancers, artists and arts workers for years to come, Queensland Ballet was seeking to create a vibrant space for their neighbours, the arts sector and the wider community.



The Ian Potter Promenade: designed to be a welcoming space.

For example, South Brisbane Transport and Mobility Study, undertaken by the State Government from September 2018 to November 2019 had documented the increasing transport pressure on the peninsula experienced by Montague Road residents and visitors.

As a result, it was decided to design and facilitate a community-led engagement process to promulgate a positive vision for the future of Montague Road, West End.

This project seeks to update our governments on the lived-experience and aspirations of a diverse community, and to inform governments about what's important for all future local development and infrastructure projects. It is located in the critical landscape of limited, highly desirable inner-city land within context of Brisbane hosting the 2032 Summer Olympics.



So, the Montague Road Project's intention is also to strengthen the sense of shared community identity and resilience as we face future challenges arising from climate change, growing economic inequality, and treaty-making.

## Purpose of participation

Montague Road Project purpose was to **empower** the community with meaningful opportunities to participate and encourage a sense of shared ownership in developing a Vision.

To seek to facilitate meaningful participation, Montague Road Project set out to achieve the following goals:

1. To gather community perspectives
2. To document the process to make it transparent to keep trust in the process
3. To build the process inclusive of diverse perspectives
4. To build community connectedness
5. To help secure the understanding of our governments of community aspirations.

## Principles that guided us

1. Connection – Montague precinct being part of the broader Kurilpa Peninsula
2. Inclusion and demographic diversity – First Nations, diverse socio-economic and cultural groups
3. Collaboration and shared purpose – groups and organisations including residents, businesses, and visitors
4. Openness and learning – respectful of new concepts and big ideas
5. Transparency and trust – reputation and previous experience
6. Impact and action – aspiring to high quality precinct outcomes, with zero carbon in our sights
7. Sustained engagement – over the long term.

## Limitations

The Project Team has worked on a voluntary basis. It has sought to be inclusive but is aware that more work needs to be done to expand on this, in particular with First Nations peoples, people living with disabilities and multicultural communities.

Nevertheless, we hope this provides a foundation from which such further work can be taken forward within individual projects auspiced by government and the private sector over coming years. We hope this report is a useful contribution for the conception stage of such future local projects.



# How we collected community data

As this was a visioning project, our approach was to encourage innovative thinking about how we might formulate solutions to our strategic challenges.

Prior to commencement, the project team explored how best to approach the development of the community Vision and held a stakeholder workshop on 25 January 2022 which helped inform our approach in this Report.

The project team also explored digital engagement platforms and collected quotes accordingly. However, after applying for several grants, it was decided to proceed without a digital platform.

So, we designed a mixed approach to reach broadly across the local community while also enabling a deep and more deliberative dive into blue sky dreaming.

## **A two-pronged approach was adopted to collect views and ideas:**

- 1. A community survey** was designed to extend the opportunity to participate in our visioning process as far across our local community as possible. As such it was developed to be quick and easy to fill in. This was open for six weeks from 12 August to 25 September 2022 and **1018 people participated**. (See our survey tool at Appendix A)
- 2. A community forum** was designed for interested community members to deliberate more slowly over the priorities arising from the survey over a full day.

The Forum ran from 10.00am to 4.00pm on Sunday 11 September on the stage in the new Talbot Theatre at Thomas Dixon Centre, Home of the Queensland Ballet, project Partner. (See our Forum outline at Appendix B)

Sixty participants were supported by four professional facilitators who planned and managed the event and eight table facilitators for group activities. Two graphic recorders delivered visual narratives and one photographer recorded the day.

The top themes identified from survey data were **Movement, Greening and Caring for Country, Culture, Work and Home**. During the forum the following additional themes were considered: **Education, Community and Climate**.

# How we reached out

A two-pronged approach was also used to invite participation in the Survey and Forum over the five weeks leading up to the Forum: 1. Online; 2. Face-to-Face.

The below shows how we used online and face-to-face methods to reach out to different stakeholder groups to raise awareness about the project and encourage participation in the survey and forum.

**Table 1: Who we reached out to and how**

Stakeholders	Engagement Goal (ref to IAP2 spectrum)	Online				Face-to-face		
		Facebook, incl units and area based	Instagram	Website	Westender	Pop-Ups and WE Mkts, History Walk	Doorknocking	One-on-one mtg, ph calls
Local residents	Empower	Y	Y	Y	Y	Y	Y	
Local young people	Empower	Y	Y	Y		Y		
First Nations peoples	Empower	Y	Y	Y	Y	Y		
Community & Not for Profits	Empower	Y	Y	Y	Y	Y	y	
Local businesses and landowners	Empower	Y	Y	Y	Y	Y	y	
Local arts & cultural	Empower	Y	Y	Y	Y	Y	y	
Visitors to Montague Road	Collaborate	Y	Y	Y	Y	Y		
Urban developers and designers	Inform	Y	Y	Y	Y	Y		Y
Government	Inform	Y	Y	Y	Y			Y

Below we provide an overview of these online and face-to-face engagement methods we adopted to encourage local residents and business owners to participate and to inform other key project stakeholders.

## Online engagement

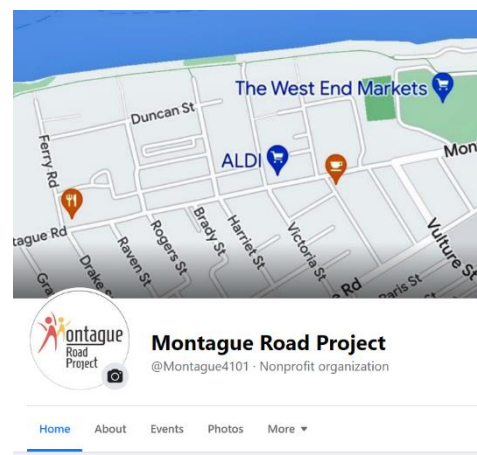
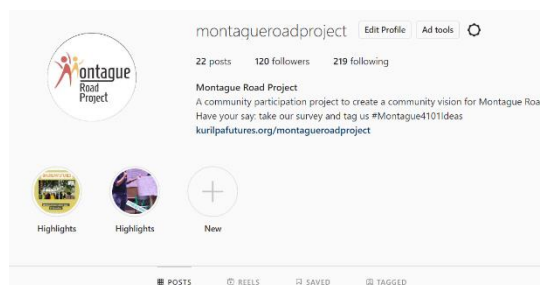
### Montague Road Project website

The website served as the homebase for the project, hosting the key information and options for participation, including where we would be out and about in the community at pop-ups, along with background reports and stories to help prompt out of the box thinking. It was hosted by Kurilpa Futures under a tab on their website.



### Montague Road Project Facebook and Instagram

Social media pages were set up and in operation from 10 August 2022 at the commencement of the community engagement leading up to the Forum on 11 September 2022.



### Our local newspaper: "The Westender"

The local news platform, "The Westender", reported on the opportunities of the project via its website stories and social media accounts.



#### HAVE YOUR SAY ON THE FUTURE OF THE MONTAGUE ROAD NEIGHBOURHOOD.

by Kurilpa Futures Sep 9, 2022 | 4101, Developments, Environment, West End West | ★★★★★

Local residents' group Kurilpa Futures brings its Montague Road Project to the Thomas Dixon Centre...

READ MORE

## Face-to-face engagement activities

### Pop Ups



Project team members held Pop-Ups throughout the subject area over the period of public engagement. A feather banner was commissioned to help people locate us on the ground. Business cards with a QR code for the website, survey and forum details were handed out and many conversations had.

Locations covered a variety of popular places at busy times along or near Montague Road including Montague Markets, Davies Park, ALDI, Glider bus stops as well as the West End ferry terminal and bus stops on Hardgrave Road and at West End State School.

Stalls were also held at Brisbane State High School Community Day and Kurilpa Derby. See Appendix C for the full schedule.

### Doorknocking

Project team members doorknocked targeted local streets and these are listed at Appendix D.

In addition, the QR code linking to the project webpage and survey was posted on many local apartment and community notice boards.

### Guided local history walks along Montague Road

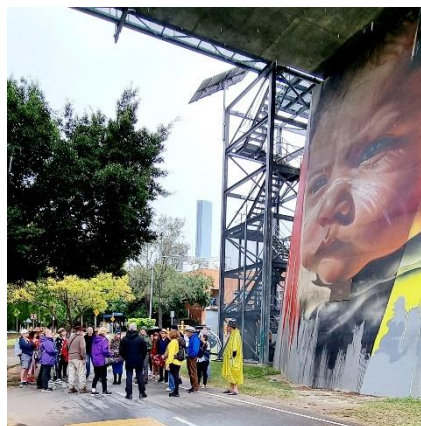
Two historical walks aimed to share our local history. Land use, history and architecture since First Peoples use to early settlement and current development were discussed.

By focusing on the past, the project hoped to prompt conversations about what people would like to see for the future of Montague Road.

The walks were hosted by Tim Quinn, Helen Abrahams and Steve Capelin of the West End Making History Group.

**Part One:** The first public guided history walk was along the North section of Montague Road, from Billie Brown Theatre to Davies Park. This was held on 13 August and attended by 25 people despite it being a rainy day.

**Part Two:** A second public guided history walk covered the other half of Montague Road from Davies Park to Orleigh Park. This was held on Sunday 27 November and 25 people attended again.



## Guided local planning walk and presentation - UQ Planning students

The project hosted University of Queensland (UQ) planning and design students for a walking tour to support their assignments to develop plans for the regeneration of Montague Road. As advertised on project social media, some of the student groups then presented their proposals to the public.

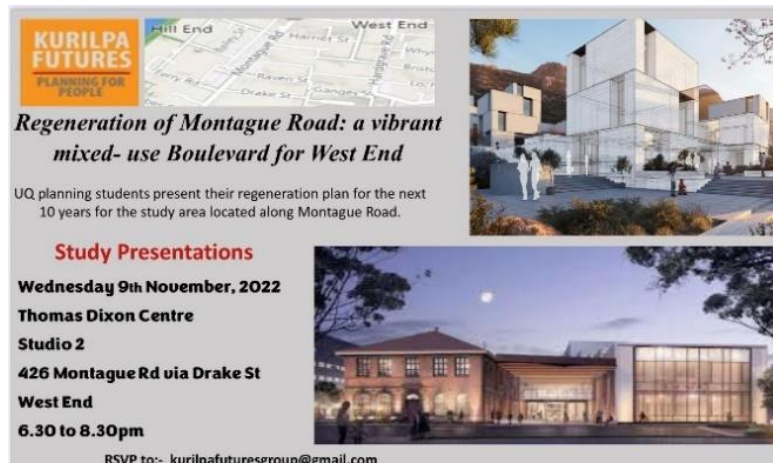


Photo: Public notification of UQ student presentation on their assignments on the regeneration of Montague Road.

## Face-to-face meetings

Senior officers in relevant organisations and individual practitioners with relevant skills and experience were approached to raise awareness about the project and to invite attendance at the Forum as observers. These included people seen as key decision-makers and influencers, including the Lord Mayor and the Minister for Transport, along with Business South Bank and developers.

## Final Engagement Metrics

Engagement metrics on project activities to encourage participation in the Community Survey and Forum: 10 Aug to 25 September 2022			
<b>7212</b> FB Reach	<b>705</b> FB Page visits	<b>811</b> Insta Reach	<b>16</b> Apt building Facebook pages
<b>16</b> Face-to-face Street Pop Ups	<b>264</b> Conversations at Pop Ups	<b>2520</b> QR code cards handed out	<b>25</b> Apt buildings had QR code in reception
<b>134</b> Emails sent	<b>1</b> Westender news articles printed	<b>125</b> Business & Organisation doorknocks	<b>33</b> Residential streets doorknocked

<b>Measures of actual participation:</b>	<b>705</b> QR code scans	<b>1018</b> Community Survey responses	<b>60</b> Community Forum attendees
--------------------------------------------------	--------------------------------	-------------------------------------------------	-------------------------------------------



# Who Participated

## At the Forum

Going by details collected at registration, all 60 participants at the **Forum** were locals, including less than five from local businesses and development and similar numbers from local community organisations. Political representatives from each of the three levels of government attended as observers for parts of the day.

## In the Survey

Below are the collected demographic details of the **1018 Survey participants**. They are presented here to show the depth and reach of participation in this project. See Appendix E for raw data.

### By Postcode

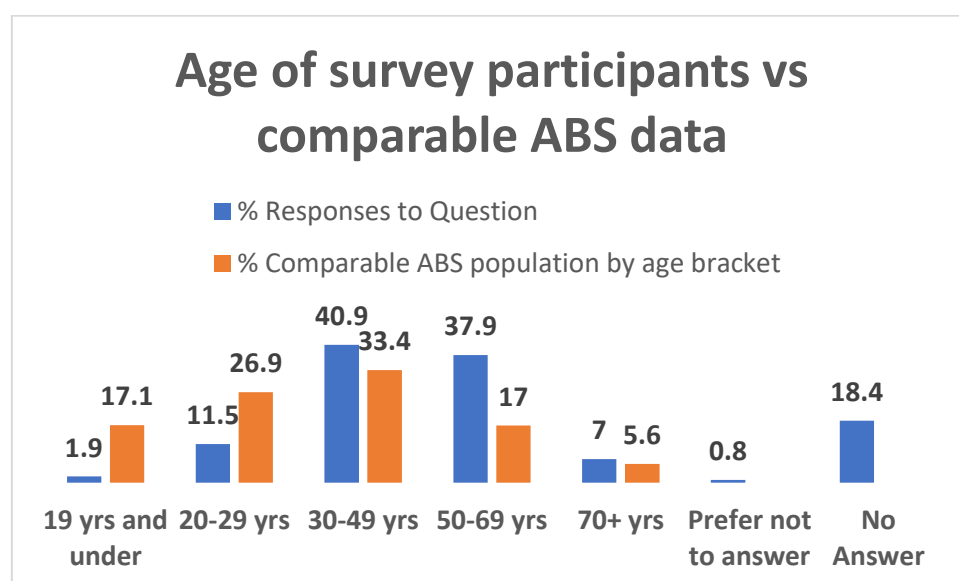
Most people participating in the survey lived in the local 4101 postcode area. A total of 81% of participants responded to this question and of these 89% lived within the 4101 postcode, which equates to 72% of the total number of participants.

The remainder of the post codes were from an additional 43 post codes with the larger of the still very small numbers coming from surrounding suburbs.

### By Age

The Chart below compares the age of survey participants with equivalent breakdown by age bracket across the 4101 postcode. It shows the survey attracted a higher proportion of participants aged 30 – 70 years as compared with local ABS reported statistics, and fewer people under 30 years.

**Bar Chart 1: % Survey participants age compared with comparable ABS data**

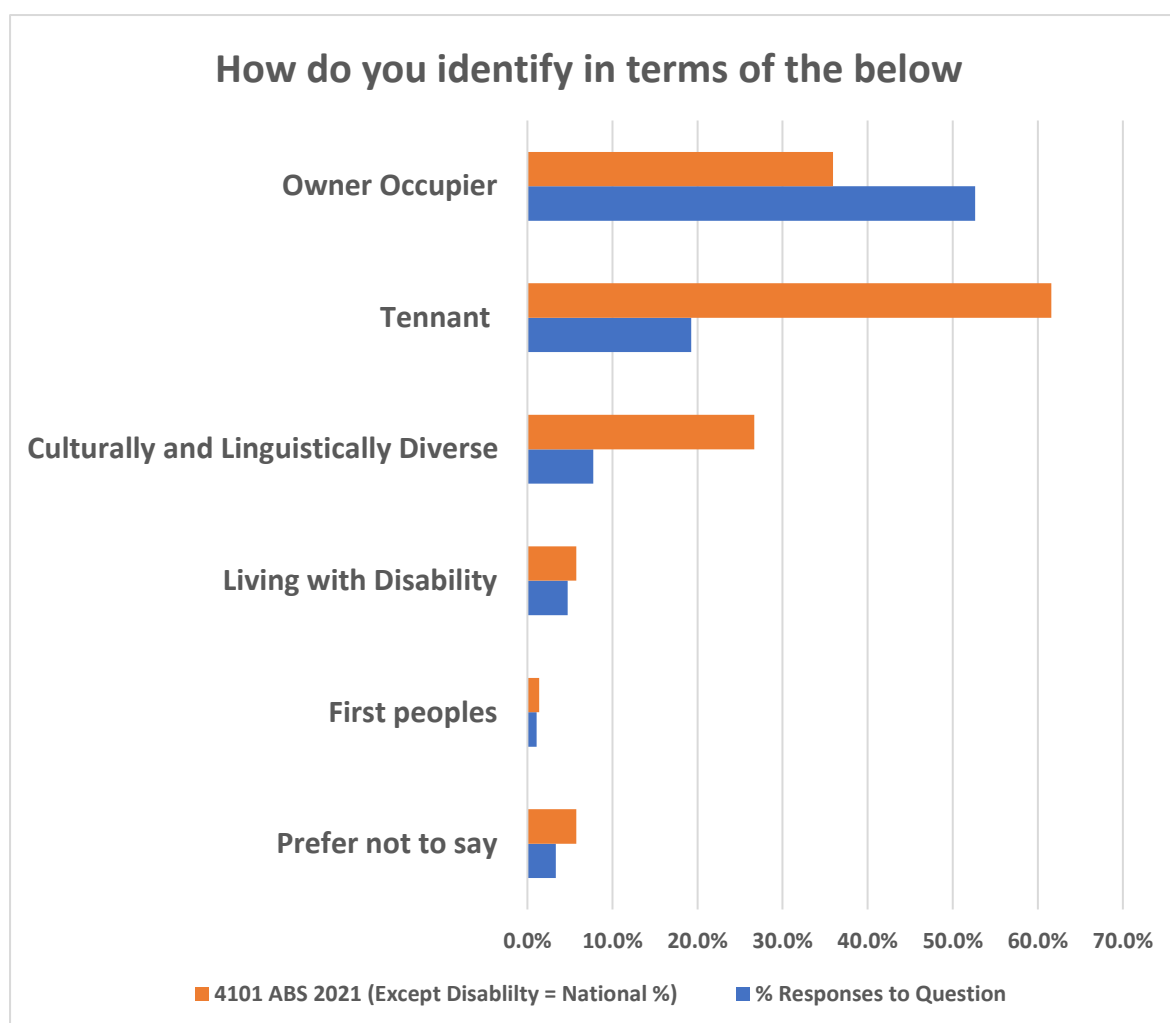


Reference: 2021 Census of Population and Housing, General community profile, 4101, QLD (POA4101) 5.1 sq Kms

### By Various Identifications

Despite best efforts as a volunteer community group, survey responses showed that significantly fewer tenants filled out the survey than owner/occupiers, whereas going by ABS postcode data it should have been the reverse. Similarly, there was a significant under-representation of people identifying as culturally and linguistically diverse as compared with the postcode ABS data. Note, as postcode data on disability was not easily found, the national rate was adopted and this shows a fairly close alignment.

**Bar Chart 2: Identification with any of the following groups (tick all that apply)**





### By Frequency

Most participants visit or travel along Montague Road most days with this group making up 86% of participants.

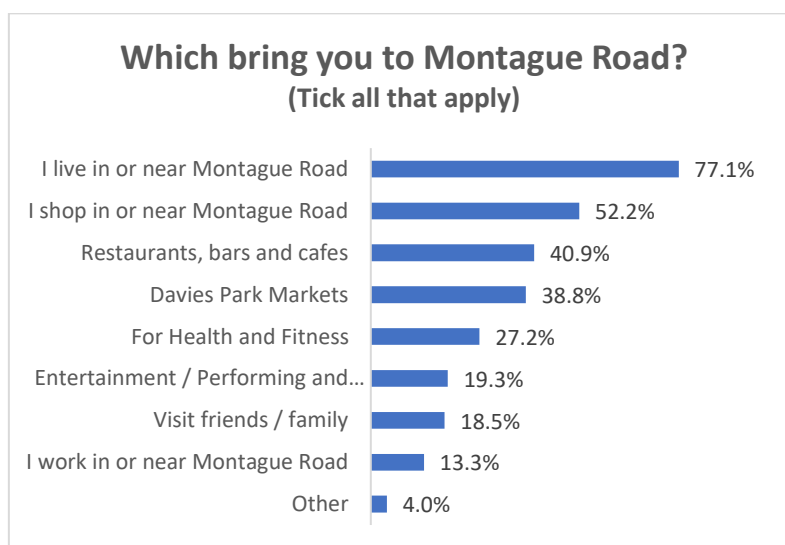
**Table 2: Participant frequency of visiting or travelling along or across Montague Rd**

Frequency	% Responses to Question
Most days	69.8
A few days per week	16.2
Weekly	6.3
Monthly	2.3
Every few months	1.8
A few times a year	0.4
Yearly or less	0.1
I never use Montague Rd	0.1
No Response	3

### By Reasons for visiting

The main reason for coming to Montague Road is that the survey participant lived in or near Montague Road, followed by shopping.

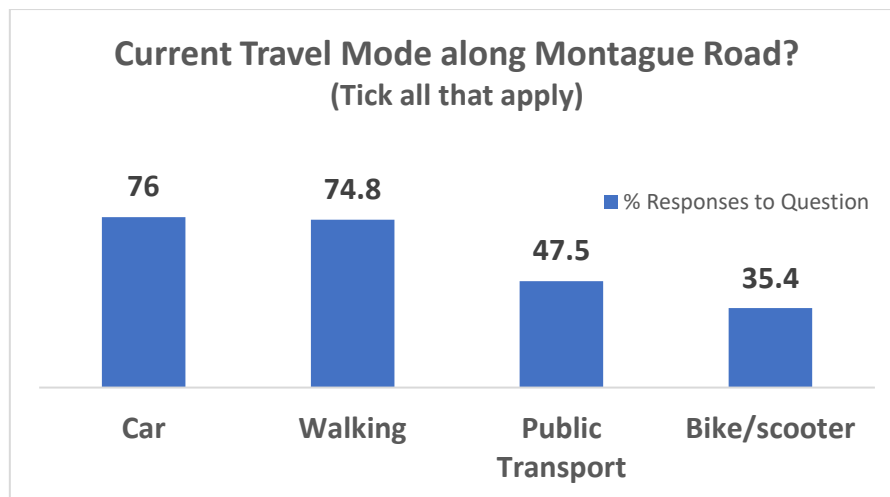
**Bar Chart 3: Participant reasons for visiting Montague Road**



### By Modes of Travel

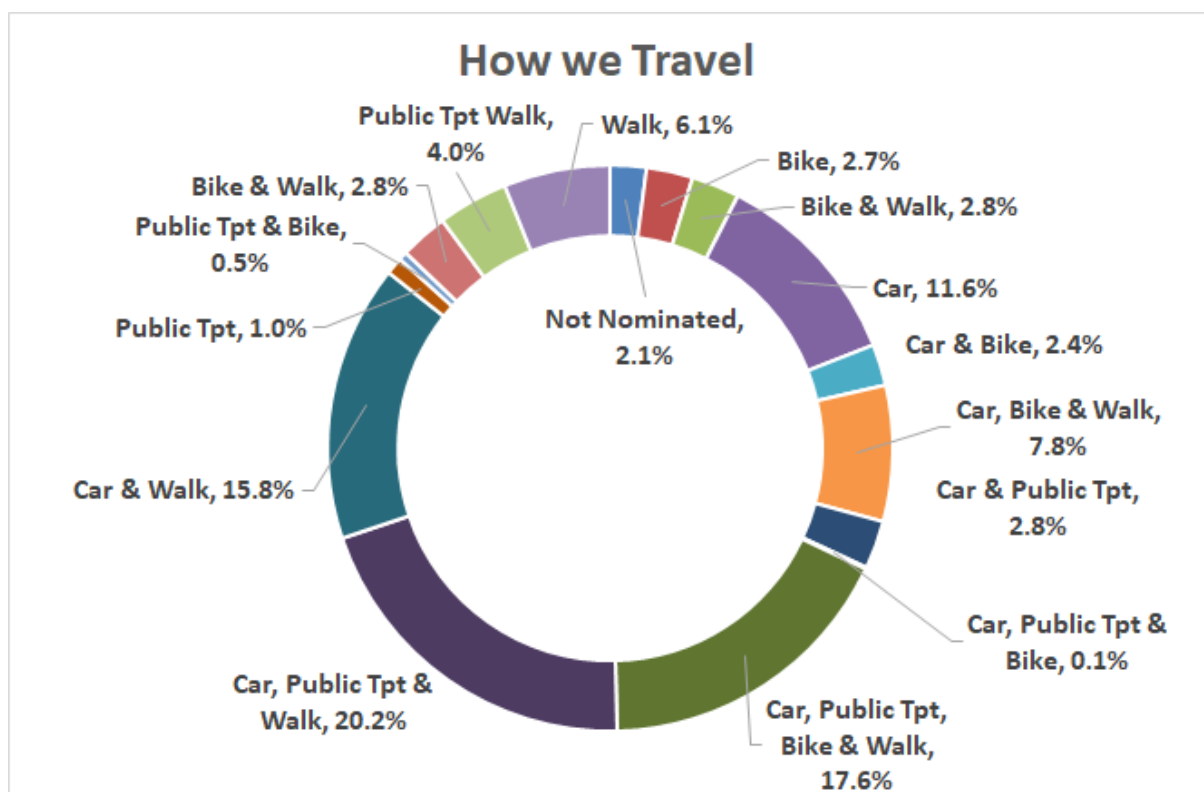
Of interest, the below chart shows that over a third of respondents use bicycles or scooters and over half do not use public transport yet.

**Bar Chart 4: Participant modes of travel along Montague Road**



As many people use more than one mode of transport, the below pie chart seeks to flesh out what is happening under a more granular microscope. It shows that almost 80% of respondents are multimodal and that only 11.6% reported car as their only mode of travel.

**Pie Chart 1: Participant multi-modes of travel along Montague Road**



# What we heard

## Pop Ups

Pop-Ups were primarily intended to raise awareness about the Survey and Forum rather than collect data. However, when issues were raised with team members they were recorded. These can be found at Appendix F.

Where issues were raised at pop-ups, they were captured as data to feed into the development of the vision. These mostly related to transport and safety. In addition, there was a suggestion for a Blossom Festival and, also, to keep the 'grunge' feeling of West End.

One resident living in an apartment shared their experience as follows: *"Although we're living closer together, the irony is that sometimes in apartments it can feel as though you're more disconnected from community"*.

## Community Survey

### Three words to describe ideal vision

As a visioning project, we asked respondents to think about Montague Rd and its potential to be an ideal space for them. Respondents were asked to share three words (or phrases) they would use to describe their ideal vision for Montague Road?

While many shared three words, others shared phrases with more than one topic and even paragraphs. This raw data is at Appendix G.

Below are some different ways of looking at the raw data.

The top nine words respondents used to describe their ideal vision for Montague Road are listed here:

1. safe
2. green
3. traffic
4. friendly
5. pedestrian
6. trees
7. community
8. bike
9. space

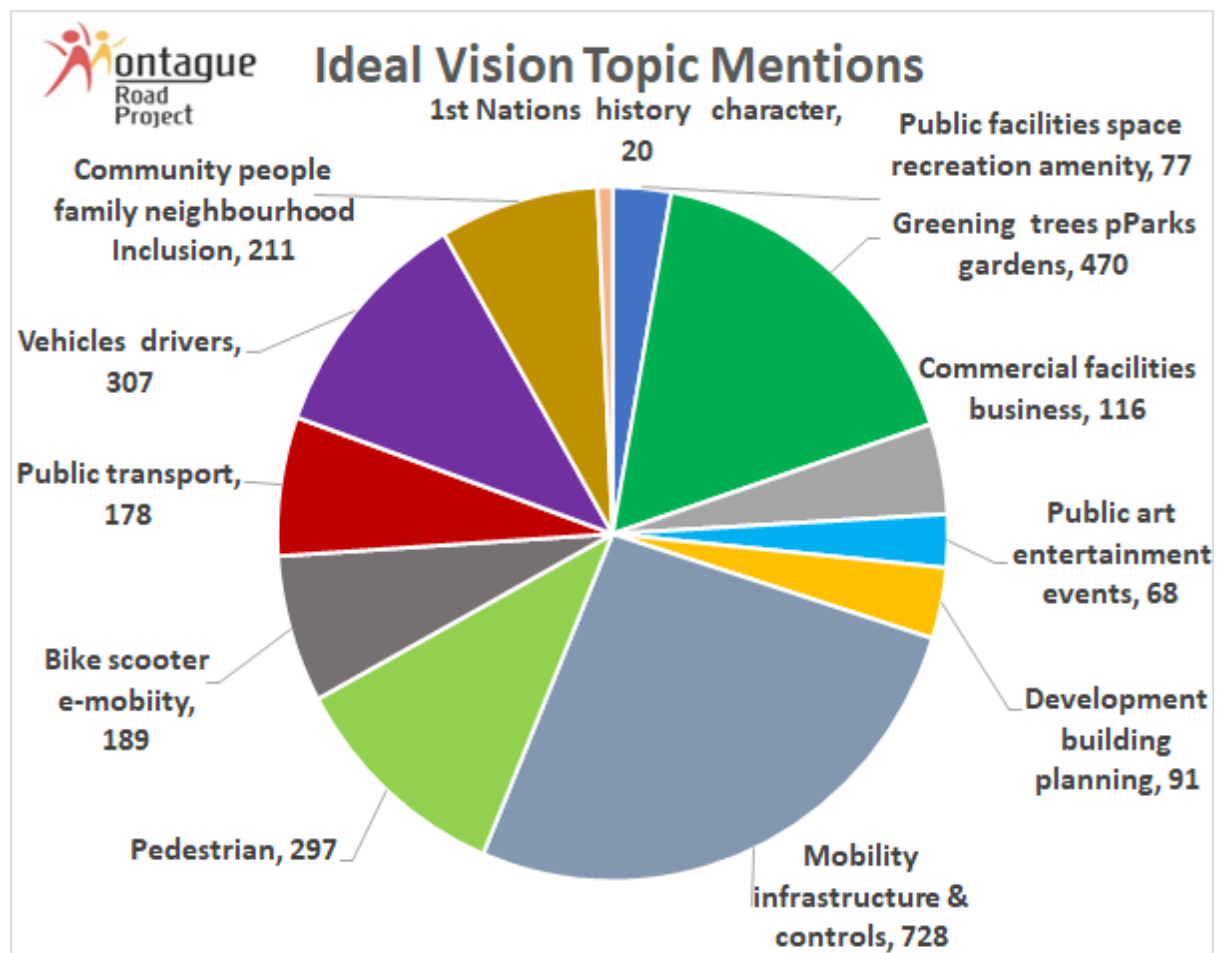
This **Word Cloud** is from all the answers to this question asking respondents to describe their ideal vision for Montague Road.



A more detailed analysis of the data respondents shared when asked about their vision for the future of Montague Road sheds some light on the range of topics.

As some responses included more than one concept, the below pie chart shows the results of an analysis of the number of times a broad topic was mentioned.

### **Pie Chart 2: Topics mentioned when asked to describe ideal vision for Montague Road**



To help interpret the categories, below are sample comments related to each of the above categories.

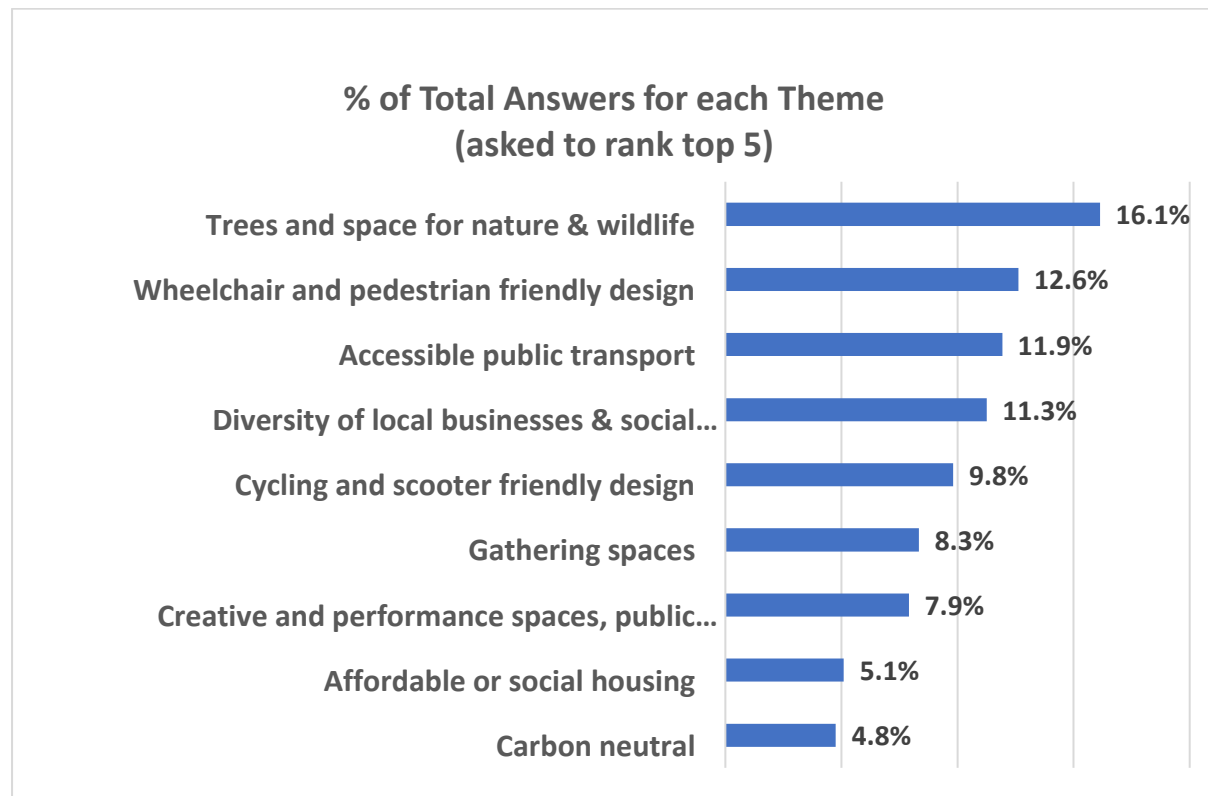
**Table 3: Representative comments to describe each category**

Category	Representative comments when asked about their ideal vision for Montague Road
Public facilities, space, recreation	More public inclusive spaces for community Public space Seats
Greening, trees parks etc	Increased green space Environmentally conscious Green and leafy and well shaded
Commercial facilities, business	Diverse businesses Warehouses More socially based businesses
Public Art incl entertainment, events	Community spaces supporting local creativity Creative arts displayed on every block More entertainment, eg Friday night street markets
Development, buildings, Planning	More social housing in all the empty spaces Height AMSL so we know how high or low we are, literal AMSL - above mean sea level
Mobility infrastructure & Controls	Accessible and inclusive for people with disability Can we please get a separate lane for scooters? They are so dangerous on the footpath. Safe crossings at all busy intersections
Pedestrian	More foot traffic friendly with safe crossings lower speed more trees better footpaths. Safe to walk /cross the road Safer for pedestrians, cyclists and scooter users
Bike/Scooter e-mobility	Dedicated separated bikeway Safe commuting Proper bike/scooter paths
Public Transport	Public transport prioritised over private transport Bus Priority & Bus Jump Lanes A West End bus loop travelling along Montague Rd
Vehicular including drivers	Speed limit reduced to 30km/hour Less cars and Less parking More parking
Community, people, family, neighbourhood	Family oriented Multi-use - for sport, dogs, families, relaxation, socialising Community plaza
First Nations, History, character	Acknowledging first nations people Reflect heritage of area A history-telling precinct

## Shaping Character and Identity

The way that places look and feel is important in shaping the character and identity of a road. Respondents were asked which of the following they would like to see prioritised for the future of Montague Road by indicating their top five preferences. See Appendix H.

**Bar Chart 5: Top Priorities for the Vision**

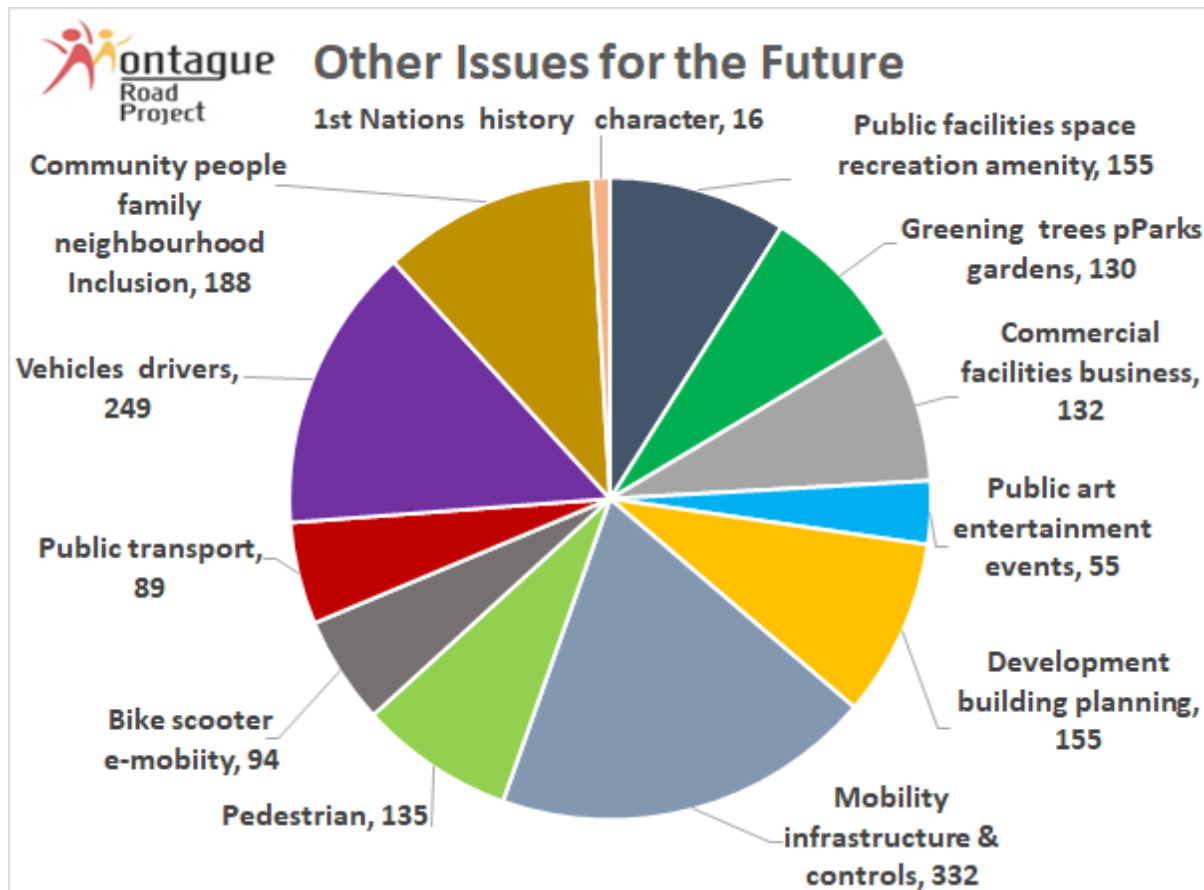


## Other issues to consider in future planning

Respondents were invited to identify other issues they would like to see considered in future planning for Montague Road.

Here below is a pie chart of the number of mentions of issues using the same categories as was used for the pie chart above reporting on vision words. The Raw data is found in Appendix I.

**Pie Chart 3: Other issues that should be considered in future planning for Montague Rd**



## Community Forum

In this section, we summarise by theme all data collected across the different activities held at the forum.

Appendices J, K, L, M and N document the verbatim raw data collected at each stage of the Forum, from the Individual Big Ideas through the World Café, Scenario Building and final Exemplars.

Five initial themes were selected from priorities identified from a preview of the survey data immediately prior to the Forum. These were **Movement, Greening and Caring for Country, Culture, Home and Work**. Three additional themes were added by the group on the day, based on the morning's deliberation, for the Scenarios onwards, being **Climate, Community and Education**.

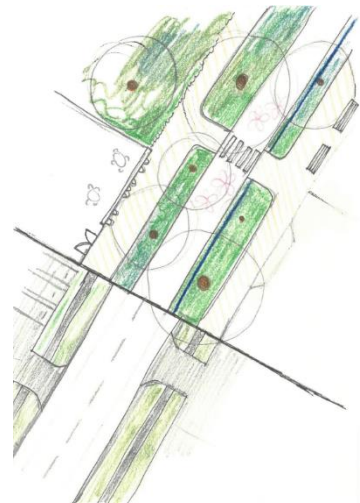
Disclaimer: Please remember as you read on that these are summaries only of all the ideas from the Forum by theme. In particular, they are ideas only and no further consultation has been undertaken in relation to implementation of any of them, or particular support given. This document is a report only of what people said. For example, the project recognises that, while the Forum expressed support for a First Nations Cultural Centre, we were not successful in achieving meaningful First Nations participation.



## Movement Theme Summary

### Key drivers for change were expressed as:

1. **Affordability:** The cost of public transport is perceived as a problem. It can be cheaper to drive.
2. **Safety:** Montague Road and its intersections are dangerous for pedestrians, cyclists and people with disabilities.
3. **Connectivity:** We need public transport connectivity to other 4101 hubs and transport hubs.
4. **Emergencies:** We need to be able to provide emergency vehicle access to apartments and ensure there are emergency exits in times of flooding.



### Call for visionary thinking:

There was a call for new ways of thinking and doing transport by 2035. Participants wanted to see integration with all types of transport planned efficiently and in conjunction with each other. Locals and visitors alike would choose public transport or active travel options.

To make it safer, Montague Road should be an experience rather than a thoroughfare. It should be a welcoming place, green, shady with native grasses and wildflowers, wayfinding and meandering pathways to parklands and the Brisbane River.

### Forum Participants envisaged that in 2035, transport design is people focused:

- **Public transport experience** is world class and multigenerational, not just for teenagers, workers and older people, but for visitors to our cultural and riverside destinations as well. To accelerate the transition to zero carbon living, it is also free and frequent. It includes a local hail and ride 4101 shuttle buses.
- **The pedestrian experience** needs to be redesigned with numerous safe crossings, rest stops, drinking fountains, shade and lighting and kerb ramps for prams and personal mobility devices. There will be no cars backing out across footpaths.
- **The cycling and scooter experience** needs to be redesigned along Montague Road to ensure cyclists are protected from cars and trucks.
- **The driving experience** will include a 40 kph speed limit or lower. There will be enough electric vehicle charging stations. Cars will be smaller, more likely rented for individual trips when needed and driverless.



### Blue-sky dreaming ideas:

- Free public transport
- More river access via ferry stops - at least two more
- Train station close by; Monorail – taking volume of traffic off road
- Tram/Light rail down the centre of the road or above the road
- Over-passes across Montague Road for bikes, pedestrians and animals
- A solar road
- Part closure of Montague Road to make it a promenade
- Sections of road dug up and planted with native grasses and trees.

## Culture Theme Summary

### Key drivers for change expressed as:

1. **Cultural opportunities:** Limited opportunities to embrace cultural perspectives and leadership as result of poor planning, eg lack of live music venues and limited green space available for events.
2. **First Peoples:** Current recognition is tokenistic. There is an imperative for an increased presence of First Nations.
3. **Loss of character:** Since the 1970's, there has been a loss of character. Affordable housing is needed to sustain diverse communities.

### Call for visionary thinking

The thinking supporting a cultural focus fell into two main points: the infrastructure and the social structure of Montague Road.

A masterplan for the northern industrial land/sites would include significant First Peoples cultural facilities.

The social capital would be people-centric; in a place where diversity reigns, in a street viewed universally as the 'most fascinating street' in Australia.



### Design is Arts-focused:

- Disused warehouses and abandoned buildings offer mixed uses to reflect the whole range of city life, with spaces for creative expression in the music and visual arts, and dance and theatre venues, encouraging the 'creative class'.
- A treelined street enabling visitors to move along the length of Montague Road, enjoying a streetscape of public art, and stopping at designated venues to enjoy events, workshops, and small-scale retail and creative activities, eg: [www.theatrebus.com.au](http://www.theatrebus.com.au)
- Regular outdoor events connected via green bridges at Davies Park to north of the river support the permanent art focus of the theme.
- A mixed community of residents and businesses will encourage continued multicultural growth and welcome international visitors.
- Affordable housing sustains diverse liveability with a proposed 10% in all developments.

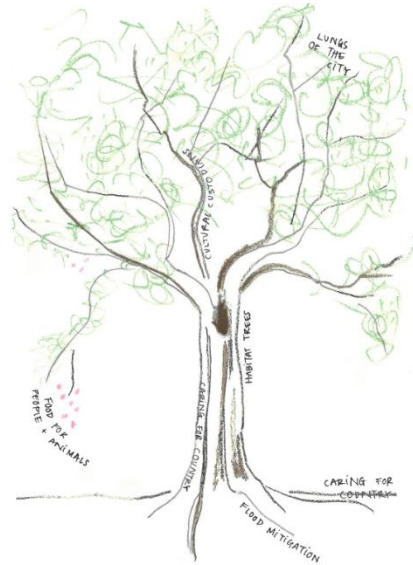
### Blue-sky dreaming ideas

- A new Cultural Centre for First Nations providing meeting spaces and the opportunity to explore the histories.

## Greening and Caring for Country Theme Summary

### Key drivers for change expressed were expressed as:

1. **Climate heating:** With the loss of natural habitat and canopy cover, we are in the middle of a growing heat island.
2. **Lack of green Space:** Public green spaces included in private development are often not genuine public green space (especially apartments).
3. **Less space for Nature:** Limited space for natural ecosystems and trees between wall-to-wall density developments.
4. **Floods and mitigation:** Lack of flood plain. John Oxley said keep 100 m free each side.



### Call for visionary thinking

There were calls to:

- focus on nature with urban food forests, more parks and a green shade corridor down the length of Montague Road and its side streets to cool the heat island effect, re-claim flood plains and achieve net zero outcomes.
- make Montague Road a Green Corridor with arch shaped canopy trees overhanging fairy lights and wide footpaths including benches to enable residents, workers and visitors to gather in the shade.
- ensure the Olympic Games site becomes a green space linked to South Bank.
- re-use the Parmalat, Visy Glass Recycling buildings as a bushland area, an art space with a small percentage of commercial and residential.
- create new green space to include a new Cultural Centre for First Nations with 50% representation of First Nations on the governing body.

Davies Park should continue to attract for its huge shade trees with many outdoor, cultural and environmental events and workshops for all ages.

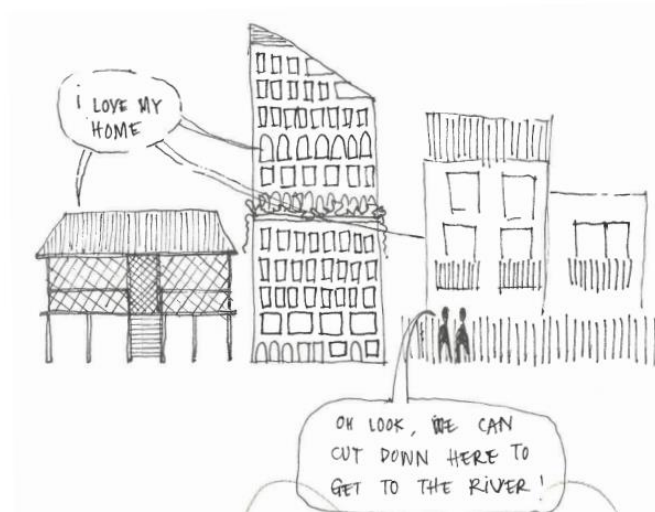
### Forum Participants envisaged that in 2035, urban design is nature focused:

- Space for urban wildlife for children to see and learn
- More open spaces to match population growth: a distributed collection of small parks along the length of Montague Road, the size of one or two houseblocks.
- Snack tracks and bush tucker community garden
- Dense planting all the way down for shade, sun protection and heat reduction.
- Playgrounds, skateparks, hover parks, dog parks, outdoor cultural experiences
- People would be able to read the landscape that used to be in the area, endemic, medicinal and food plants, using art to help educate.

### Blue Sky Dreaming ideas

- Original custodians back and caring for country. Treaty.
- Asphalt removal opportunities for more trees.
- Montague Road closed to heavy vehicles and cars but not public transport.
- A road flanked by open space where people gather to enjoy the locality and facilities it offers - fewer straight lines in streetscape.

## Home Theme Summary



### Key drivers for change expressed as:

- **Safety of children:** impacted by limited number of family-sized units and a shortage of childcare for residents and workers.
- **Lack of 'affordable housing':** for families, older people, and young people. Apartments referred to as 'luxury living'.
- **Flooding:** impact of climate change by 2035

### Call for visionary thinking

Public spaces in new developments with views and pedestrian access to the river, architectural diversity of form maintained, plus climate resilient homes, age-appropriate care facilities, and schemes such as shared autonomous cars and rent-to-buy housing options. Forward thinking in the theme HOME also includes the growing interest in diverse sports (note the 2032 Olympics), the provision of spaces and activities other than shopping, and the focus on safety and entertainment for kids.

### Design is Service-focused

- Children 'seen and heard': spaces for inclusive activities with consideration for playgrounds, school, entertainment, and overall safety
- Age appropriate: care services and independent living for the older cohort
- Parks to include diversity of sports, safe play spaces for children and greater diversity of uses for Davies Park
- Transport providing access to supermarkets, playgrounds, community activities

### Blue-sky dreaming ideas

Residents will be well-connected to services designed for a multi-generational population, with safety and provision for children a priority.

Residents will:

- walk or use private vehicles, bicycles, scooters and community buses
- to access the many essential and other services on offer
- for liveability in a climate-conscious world.

## Work and Education Theme Summary



### Key drivers/concerns for change expressed as

1. Increasingly busy road means people and children travelling to workplaces and schools are at risk
2. Loss of employment opportunities
3. Homogeneity of businesses and commercial enterprises

### Call for visionary thinking

Live, work, learn, and play safely within the Peninsula, acknowledging the neighbourhood as a place of mixed work and learning opportunities, housing, transport and investments, with First Nations visible across all aspects of the Peninsular.

### Design is Accessibility-focused

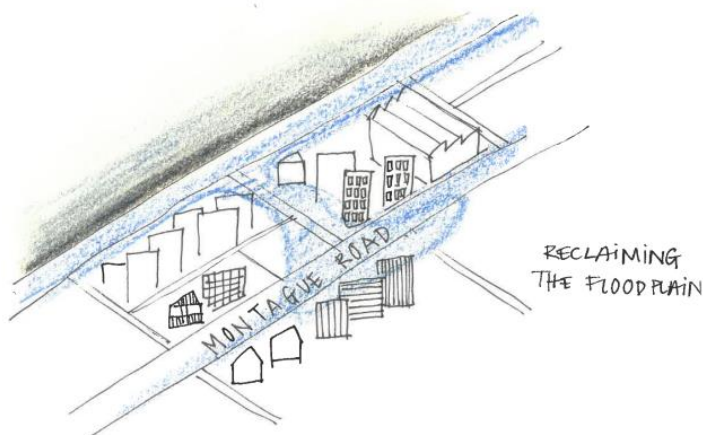
4. Cycling and pedestrian integration across the peninsula
5. Connectivity to the north side of Brisbane River via Green Bridge
6. Reduction of traffic to improve pedestrian safety
7. Part-time work opportunities relevant to young people
8. Strong collaborative networks within arts and cultural workers

### Blue-sky dreaming ideas

A new First Nations Culture Centre will provide visibility and employment for First Nations people and education for visitors.

A student population from early childhood through to tertiary levels is serviced by a new school at Kurilpa Point, with facilities easily accessed by parents of young children, and safe active travel for secondary students including street lighting.

## Climate Theme Summary



### Call for visionary thinking

Climate is an overall driver for everything around Montague Road to serve as a model for climate change adaptation and achieving Australia's Paris Agreement targets, with water, energy, amenity and mobility as focus.

### Focus on shade and cooling along Montague Road

- Dense planting for shade all along Montague Road
- Montague Road Canopy - large trees down the middle of the road, dense and wide to shade both footpaths for safe-from-sun walking
- Dense planting on glass factory site with Harpulias, for example.

### Design is Climate-focused

1. Reduce heat island effect by five degrees
2. Home design is resilient
3. Utilities stay dry above floods
4. Water storage is across roof spaces for gravity flow for re-use - to slow down water run-off in heavy rain events and store for droughts.
5. Green roofs above layer of roof water storage
6. Creative community art shade solutions for shade
7. Reduce building footprints
8. Reduce energy load and realise economic benefit in energy savings
9. Reduce rebuilding after climate disasters
10. Realise economic benefits can be circular.

### Blue-sky dreaming ideas

9. Montague Road could become a model for responding to climate.
10. Montague Road could become an (International) climate change hub.
11. The project could form a community climate skills resource working group.



## Community Theme Summary

There was a call for a values driven approach: resilient, local, active, outdoors, First Nations, business, multicultural, healthy.

### The Forum participants called for a sense of 'village', meaning:

- a sense of community connection – to overcome loneliness
- a sense of place
- a sense of safety, including on the road and everyone housed
- a sense of respect for each other's different cultures
- a sense of respect for First Nations.

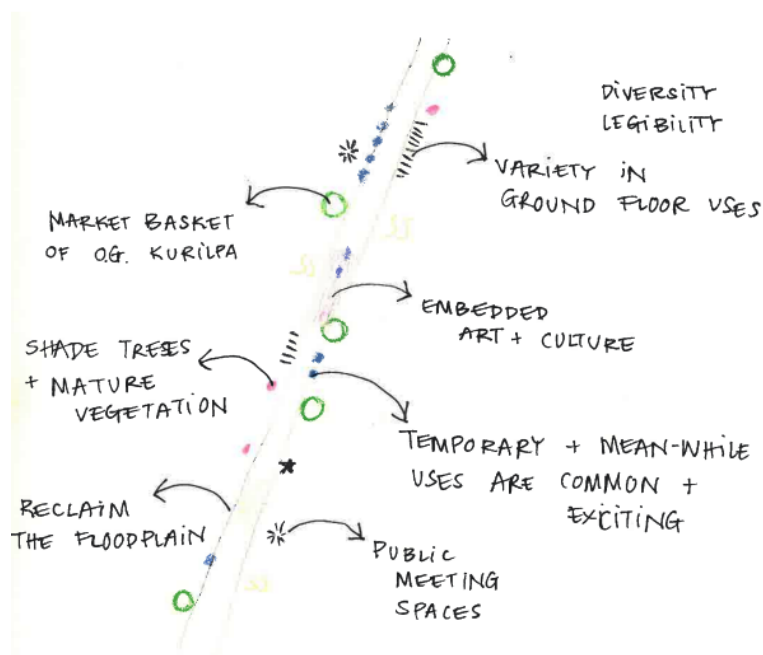
### The 'village' experience would include:

- Gathering spots along Montague Road
- Spaces for community groups
- Safe places for children to play and run near the apartments.

### Design is human scale/centred:

- Design to enable a village experience of community connection.
- No high-rise directly fronting MR. Low units (3 levels) with car parks.
- Retain buildings/homes of interest and re-use current / historical building/resources
- Transition industrial buildings and warehouses into mixed precincts with community spaces with room for the Arts - workshops, space for artists to work and perform, galleries etc.
- Retain diversity of architectural form: tin and timber, industrial, mixed use.
- Blue-sky dreaming ideas

There was a call to remove wires above road to improve visual amenity.



## Next Steps

Already, the project was able to submit two big ideas from group work at the Forum to Brisbane City Council's Inner Spark program which invited community 'bright ideas' by midnight Sunday 25 September 2022. We were lucky that it was still open allowing just enough time to elucidate two big ideas from the Forum to submit. (See Appendix N)

This report, ***Community Engagement Report, Visioning for 2035, Montague Road Project***, is the companion document serving as the evidence-base, for the ***Montague Road Community Vision 2035***.

The two documents together will serve as a resource for government and the development sector going forward locally.

They can be considered as a starting point for engagement with local communities and businesses at project conception stages. However, of course, they are not a substitute for project specific engagement.

The Montague Road Project will make this Report available online to all participants, local community and businesses stakeholders as well as all three levels of government, private sector developers, town planners, architects and other design professionals and companies.

## Conclusion

The Montague Road Project concludes that the process of active and transparent community engagement sheds light on valuable community insights that can help guide future local development and infrastructure projects.

At the same time, it helps strengthen a sense of shared community identity, placemaking, and resilience as we face and work to resolve future challenges.

The project team thanks all participants who engaged at any stage of this process.

## Acknowledgements

Queensland Ballet  
Kurilpa Futures members  
Jonathan Sriranganathan, Councillor for The Gabba Ward  
Amy McMahon MP, Member for South Brisbane  
Angela Dean  
Mary Maher  
Pauline Peel  
Gina Englehardt  
Rocco Dascoli



# APPENDICES

## Appendix A – Survey Tool

### **We invite you to fill out this brief survey on your hopes for Montague Road.**

“The Montague Rd Project” is a group of community organisations working together to ensure future development on Montague Rd better meets the needs of the local community and visitors. This survey will help us collect community views to inform our Community Forum, and to support the development of a community vision for Montague Road for presentation to all levels of government. This survey is anonymous and takes about 3-5 mins to complete.

### **Why it's important:**

Our community voice is diminished without yours! Please help spread the word in your local networks on the ground. By filling out this survey you will help ensure healthy community participation in government decision-making about Montague Road into the future.

### **Here are a couple of quotes to inspire you:**

“If you don't know where you are going, you'll end up someplace else.” – Yogi Berra

“Without leaps of imagination or dreaming, we lose the excitement of possibilities. Dreaming, after all is a form of planning.” – Gloria Steinem Please add your voice to help create our community vision.

### **Privacy Statement**

This survey is being conducted by Kurilpa Futures and partners. We are a community organisation that aims to ensure that that development on the Kurilpa peninsula meets the needs of the residents of, and visitors to, South Brisbane and the wider Brisbane community. Let's put people and communities before developers. The collection, use, disclosure, storage, and security of personal information of this survey initiative is done in accordance with the provisions of the Information Privacy Act 2009 and the Privacy Act 1988, including the conditions for the lawful processing of personal information. This Survey will collect only the information you care to share: survey responses (e.g. your opinions) to inform and influence decision-making and future planning of the region. We are not asking to reveal any personal information. All information collected will be used for these stated purposes only and will not be given to any other person or agency.

**Q1** Firstly, we would like to understand how you use Montague Rd. How often do you use (visit or travel along, or across) Montague Rd?

- ☐ Most days
- ☐ A few days per week
- ☐ Weekly
- ☐ Monthly
- ☐ Every few months
- ☐ A few times a year
- ☐ Yearly or less
- ☐ I never use Montague Rd

Q2 Which of the following brings you to Montague Rd? (tick all that apply)

- ☐ I live in or near Montague Road
- ☐ I work in or near Montague Road
- ☐ I shop in or near Montague Road
- ☐ Entertainment / Performing and visual arts
- ☐ Restaurants, bars and cafes
- ☐ Davies Park Markets
- ☐ For Health and Fitness
- ☐ Visit friends / family
- ☐ Other \_\_\_\_\_

Q3 How do you currently travel along or across Montague Rd? (tick all that apply)

- ☐ Car
- ☐ Public transport
- ☐ Bike/scooter
- ☐ Walking

Q4 We would like you to think about Montague Rd and its potential to be an ideal space for you.

What are three words (or phrases) you would use to describe your ideal vision for Montague Road?

\_\_\_\_\_

Q5 The way that places look and feel is important in shaping the character and identity of a road. Looking at the following list, which of these would you like to see prioritised for the future of Montague Rd? Please indicate your top 5 preferences by numbering them from 1 to 5 in the boxes below:

- \_\_\_\_\_ Creative and performance spaces and public art
- \_\_\_\_\_ Diversity of local businesses and social enterprises
- \_\_\_\_\_ Gathering spaces
- \_\_\_\_\_ Trees and space for nature and wildlife
- \_\_\_\_\_ Accessible public transport
- \_\_\_\_\_ Cycling and scooter friendly design
- \_\_\_\_\_ Wheelchair and Pedestrian friendly design
- \_\_\_\_\_ Affordable or social housing
- \_\_\_\_\_ Carbon neutral precinct

Q6 What other issues would you like to see considered in future planning for Montague Rd?

\_\_\_\_\_

Q7 To help us understand the diverse needs of our community, we have a few questions about you. Which of the following best represents your age?

- ☐ 19 years and under
- ☐ 20-29 years
- ☐ 30-49 years
- ☐ 50-69 years
- ☐ 70+ years
- ☐ Prefer not to answer

Q8 Do you identify with any of the following groups (tick all that apply)

- ☐ First Peoples
- ☐ Living with a Disability
- ☐ Culturally and Linguistically Diverse
- ☐ A tenant living in or near Montague Road
- ☐ An owner/occupier in or near Montague Road
- ☐ Prefer not to say

Q9 What is the postcode of your main place of residence? \_\_\_\_\_

**Thank you for completing this survey - we appreciate your time!** To find out more about this project or to register for our Community Forum - please [click here](#). To stay connected with our "Montague Rd Project" and other community projects, please like our [Facebook page](#).

**By strengthening connections between people and places along Montague Road the Project also hopes to build our ongoing sense of community and involvement in our local area. It's up to us!**

## Appendix B - Forum Outline

Time	Location	Activity
09:30am	Promenade	Guests Arrival
10:00am	Talbot Theatre	Workshop Commenced with Day's focus question: <b><i>What do we want to see for Montague Road's future and how best do we create and enable that future?</i></b> Solo buzz activity to write down their one big initial idea.
10:30am	Talbot Theatre	Montague Road Orientation
11:00am	Talbot Theatre	World Café – by themes, groups list <b>concerns and ideas</b>
12:15 pm	Theatre Foyer Bar and Garden	LUNCH provided
12:45pm	Studio 1	Ballet Moves activity to refresh
1:05pm	Talbot Theatre	Workshop – Groups built Scenarios under 5 themes
1:45pm	Talbot Theatre	Groups outline their scenarios; graphic recording
02:20pm	Talbot	Response Panel – 3 stakeholders explore the scenarios with the participants
02:40pm	Talbot	Group development of ideas and what will it take?
03:15pm	Talbot Theatre	Workshop Review
03:45pm – 4pm	Talbot	Workshop Close

## Appendix C - List of Pop-Ups

Date	Time	Location
6 August (Saturday)	10.00-2.00pm	Brisbane State High Day
6 August (Saturday)	8.30 - 10.30am	Davies Park River entrance
10 August (Wednesday)	Noon - 2pm	West End Ferry Terminal
11 August (Thursday)	8.30 -11.00 am	Montague Road @Davies Park, Glyder 60 stop
11 August (Thursday)	5.00 – 7.00pm	Outside ALDI
13 August (Saturday)	8.30-10.30am	Montague Markets
17 August (Wednesday)	7.00-8.30am	Montague Road @Victoria St, Glider 60 stop
18 August (Thursday)	5.00 – 7.00pm	Montague Markets
18 August (Thursday)	7.00-8.30am	199 Hardgrave Rd Bus stop # 10 @ Rialto
19 August (Friday)	9.30 - 11am	199 Hardgrave Rd Bus stop # 10 @ Rialto
20 August (Saturday)	7.00- 10.00am	Davies Park Car park entrance (sth)
24 August (Wednesday)	7.00-8.30am	Montague Road @Forbes St Glyder 60 stop
24 August (Wednesday)	11.00-1.00pm	West End Ferry Terminal
25 August Thursday	4.30-5.30pm	Donkin St Glyder Bus Stop outbound
3 Sept (Saturday)	9.00am – 3.00pm	Full day sessions Montague Markets
4 Sept (Sunday)	3.30pm - 5.30pm	Kurilpa Derby

## Appendix D – Doorknocking conducted

Project team members doorknocked most businesses along Montague Road.

In addition, Project team members doorknocked the following local residential streets:

<b>Streets doorknocked:</b>
Residential: Adelaide St, Archibald St, Ashington St, Avebury St, Bank St, Beattie St, Brady La, Cordeaux St, Crowther St, Dornoch Tce, Drake St, Drury St, Edgar St, Egbert St, Forbes St, Ganges St, Gray Rd, Hardgrave Road, Harriet St, Hoogley St, Jumna St, Montague Rd, Orleigh St, Raven St, Rogers St, Mitchell St, Morry St, Ryan St, Scott St, Skelton Ln, Skinner, St Victoria St, Vulture St,

## Appendix E – Survey Responses: Participant Demographic details

**Q1 Firstly, we would like to understand how you use Montague Rd. How often do you use (visit or travel along, or across) Montague Rd?**

<b>Frequency</b>	<b>% Responses to Question</b>
Most days	72.0
A few days per week	16.7
Weekly	6.5
Monthly	2.4
Every few months	1.9
A few times a year	0.4
Yearly or less	0.1
I never use Montague Rd	0.1

**Q2 Which of the following brings you to Montague Rd? (tick all that apply)**

<b>Reason for being in Montague Road:</b>	<b>% Responses to Question</b>
I live in or near Montague Road	77.1
I shop in or near Montague Road	52.2
Restaurants, bars and cafes	40.9
Davies Park Markets	38.8
For Health and Fitness	27.2
Entertainment / Performing and visual arts	19.3
Visit friends / family	18.5
I work in or near Montague Road	13.3
Other	4

Other reasons given for what brings you to Montague Road:

Exercise and entertainment	Transit	Dog walking	Visit a local business
Access Riverside Drive for walking along the river	As a driver it connects Hill End to the Go Between Bridge. as a grandparent I walk my grandchildren to the Orleigh Park end of Montague every week. My car is serviced at Arc Mechanical on Montague Road.	I walk my dog along sections of Montague Road.	Business
Access to rowing precinct	Drive through to see my mental health provider	Dog park	Coffee shop
City cycling access	Go to school	Walk dog	Daycare
Davies Park recreation	I commute via Montague Rd sometimes		Doctor and pharmacy
Soccer at Davies Park	I use the Go Between bridge at times		Health food shop, Mega Continental
To visit and walk around the area, Mappings Nursery	Public transport		My children's daycare is on Montague Road
	Transit along it.		shopping
	Walking to school with kids		

**Q3 How do you currently travel along or across Montague Rd? (tick all that apply)**

Travel Mode	% Responses to Question
Car	76
Walking	74.8
Public Transport	47.5
Bike/scooter	35.4

**Q7 To help us understand the diverse needs of our community, we have a few questions about you. Which of the following best represents your age?**

ABS Age Brackets	% Responses to Question	% Comparable ABS population by age bracket
19 years and under	1.9	17.1
20-29 years	11.5	26.9
30-49 years	40.9	33.4
50-69 years	37.9	17.0
70+ years	7.0	5.6
Prefer not to answer	0.8	

**Q8 Do you identify with any of the following groups (tick all that apply)**

<b>Identification</b>	<b>% Responses to Question</b>
First Peoples	1.4
Living with a Disability	4.6
Culturally and Linguistically Diverse	7.5
A tenant living in or near Montague Road	18.7
An owner/occupier in or near Montague Road	51.1
Prefer not to say	3.2

**Q9 What is the postcode of your main place of residence?**

The below are the top ten post codes of survey participants.

Note, the remainder of the post codes were from an additional 43 post codes from which there were three or fewer participants.

<b>Post Code</b>	<b>% Responses to Question</b>
4101	72
4103	1
4102	0.9
4066	0.5
4169	0.5
4053	0.4
4059	0.4
4000	0.3
4067	0.3
4105	0.3

## Appendix F – What We Heard: Pop Ups

Where issues were raised at pop-ups, they were captured as data to feed into the development of the vision. Below are specific comments recorded:

- Make public transport more affordable
- Slow down the traffic
- Keep the buildings/diversity of building form/use for new commercial businesses
- Keep the grunge
- Free buses
- More car parking needed
- Three lane tidal flow on Montague
- Become a global green city
- Noise on Montague increasing no let up on weekends
- Dangerous intersection Drake, Montague & Ferry
- Cycle more than drive, traffic in the future really worries him
- Mode sharing exercise
- Dedicated bike lane, one lane each way
- “Although we're living closer together, the irony is that sometimes in apartments it can feel as though you're more disconnected from community”.
- Person was actually hit by a car while a pedestrian crossing the road last week as a car pulled out suddenly from a side st. He narrowly averted catastrophe and ended out on their bonnet.
- Very unsafe to cycle from around these streets
- Concerned about rat-running once media center construction starts
- Very narrow streets, parking one side makes them one lane in a two way
- Opportunity in Norfolk and Cameron to block one off.
- No more highrise
- Metro style bus service
- Blossom festival
- Too much traffic
- Double busses turning from Montague into Mollison dangerous
- Rock climbing walls (primary girls at Urban climb)

## Appendix G – Survey Responses: Vision

**Q4 We would like you to think about Montague Rd and its potential to be an ideal space for you. What are three words (or phrases) you would use to describe your ideal vision for Montague Road?**

Please see this Appendix listed separately on our website as it was too large to include here as it contains all the raw qualitative data collected under this survey question.



## Appendix H – Survey Responses: Character and Identity

**Q5** The way that places look and feel is important in shaping the character and identity of a road. Looking at the following list, which of these would you like to see prioritised for the future of Montague Rd? Please indicate your top 5 preferences by numbering them from 1 to 5 in the boxes below:

Rankings	creative	business	gathering	nature	PT	cycle	pedestrian	housing	carbon
Priority 1	31	79	29	270	109	100	191	43	30
Priority 2	59	71	72	196	120	138	138	49	36
Priority 3	63	116	78	150	147	102	132	44	41
Priority 4	106	132	124	106	113	73	91	48	57
Priority 5	130	156	107	72	98	70	69	67	70
Blanks /comment	659	494	638	254	461	565	427	797	814

## Appendix I – Survey Responses: Issues to consider for the planning

**Q6** What other issues would you like to see considered in future planning for Montague Rd?

Please see this Appendix listed separately on our website as it was too large to include here as it contains all the raw qualitative data collected under this survey question.

## Appendix J - Forum Individual Big Ideas Grouped by Theme

The below is verbatim from individual participants' A4 pieces of paper. This was a warm-up exercise at the beginning of the Forum.

Movement	Movement	Greening	Community
Arches along to designate nodes with shuttle bus stopping in the evenings/ weekends, ferry stops to connect nodes	Boulevard - smooth, safe footpaths, tree-lined, no cars backing out	Parmalat, Visy Glass Recycling, buildings to be re-used, regenerated into parkland and community and arts with small % commercial and residential.	Village - not a city
Solar Road - partial sections b/w; development minimisation sphere	More zebra crossings; Cycle ways better protected	Creativity in three lined street (nature) Diversity; Variety of experiences "village", not city	Intergenerational and accessible; cultural, Entertainment, health.
Frequent, reliable and accessible public and active transport going the full length of MRd	better lighting	Green Corridor - natural shade all the way down - solar powered	Safe place for children to play and run from the units.
Cohesion, History, Narrative Representation - bicycles, cars, public transportation, people on foot Trees, Victoria Street	Shaded walking paths Lower the speed limit	Dense planting for shade and heat reduction	Comfortable, safe, green, low speed. Place of community, character Diverse cultures: independent businesses; architecture tin and timber, industrial, mixed use.
Like Melbourne Street - shade, share space, self-driving electric vehicles	Traffic management using one-way system and which footpath with adjacent cycling lanes and regular public transport (buses).	Shaded footpath so I can be safe from the sun when I walk to the market.	Not continuous coffee shops and gyms from one end to the other. West End has always been area of diversity and mixed businesses. That should be retained.
Unique boulevard	People focused (not car/truck focused).	Public parks, transport and housing; Creative communities; First nations leadership and celebration	Low units (3 levels) with car parks.
Traffic calmed but efficient and safe thoroughfare,	Safe transport above the ground	A road flanked by open space where	Transitioning the industrial buildings and warehouses

40kph, bikeways and green footpaths	Xmas lights: united as one. (picture all along the rd)	people gather to enjoy the locality and facilities it offers.	into mixed precincts with community spaces with room for the Arts - workshops, space for artists to work and perform, galleries etc. Possible? Also prob need f&b retail to make them a destination.
Frequent, reliable and accessible public and active transport going the full length of Montague Rd ie from River (Orleigh Pk) to River (Kurilpa Point).	Safer street - - lights, crossings Shuttle bus - linking West End Hardgrave Montague	A destination public garden like Botanical Gardens	No highrise directly fronting MR.
Boulevard; pedestrian and green spaces; bike track; public traffic only except deliveries and distribution for businesses; no building on flood plain. Leads to green space accessible from side streets. Shuttle bus for WE.	Traffic flows should be maintained and managed. It must remain an alive production diversified area.	In harmony with nature and seasonal rhythms.	Removal of wires (above road)
Ban private trucks and cars during morning and evening peak periods.	Bike/walk ways away from cars Better traffic solution (eg Woolies?)	Park area/benches/shade /playgrounds.	buildings/homes of interest
Active and public transport	Put public transport above the road space.	More vegetation along the streetscape - shade and edible - less straight lines.	Gathering spots along Montague Road
Bike enabled and friendly: reduced car traffic, dedicated bike lanes, reduced heavy vehicles.	Facilitate all types of transport efficiently and in conjunction with the riverfront resident.	Gardens	Retain character.
Slower traffic - 40kmp, better bus service, ie times and access; Slower traffic for all of West End; Changes for industrial spaces.	Less congestion, traffic, FREE and frequent public transport throughout Hill End, M Road, West End and Inner Brisbane - better traffic flow!	Open Space - many small spaces to match popn growth - 20% of new growth	Focus on the trees, public transport and the arts and the people who live here. It's a friendly, safe, creative and inclusive neighbourhood.
MRd reimagined as a multi-mode people and transport link supplemented by significant public transport, redesigned to emphasise	Movement with equity - not all about cars - xings.	A distributed collection of small parks along the length of Montague	<b>Creativity/ Culture</b>

pedestrians, cycle and green/blue.		Road - one or two houseblock size.	
Boulevard - Melbourne St but better; tree coverage; pedestrian access and emphasis; improved public transport; no cars	Improved footpaths with trees, gardens Mollison intersection.	Fairy lights in trees along Montague Road	A people centric place where diversity reigns; Spaces for artist expression - music, art; A green space; flowing traffic; history.
	<b>Home</b>	See more river from Montague Road.	Mixed uses reflecting the whole range of city life; Cultural - encouragement for "creative class"; Economy - many small and creative activities.
	Housing - people need to live in areas that are well connected to services - we can support more housing here.	Food for all (picture under shade street tree)	Creativity in three lined street Variety of experiences Diversity
	Residential incl Affordable Housing		Art bus

## Appendix K – World Café Data by Persona

After morning tea, participants were invited to work together at tables on a theme using personas to identify might what concern and excite that persona when they think about that theme in 2035. They then moved to a second table so everyone contributed to two themes. Below is verbatim from flip chart papers.

**In 2035, how does this persona relate to this THEME? What might be key positives and negatives about that theme by 2035?**

**Asra** is in their early 20s, in town to hit up some music, arts and culture events. They're staying with a friend in a share house.

By 2035	Asra - excites	Asra – concerns
<b>Home</b>	<ul style="list-style-type: none"> <li>Public space in new development</li> <li>Views to the river via the buildings</li> <li>Provide activities for residents apart from shopping</li> </ul>	<ul style="list-style-type: none"> <li>Demographic of the area</li> <li>Safety of the children in the area</li> <li>Apartments referred to as luxury</li> <li>Lack of affordable housing</li> </ul>

	<ul style="list-style-type: none"> <li>• Make Montague Road a boulevard (pedestrian)</li> <li>• Establishment of service road</li> <li>• Genuine use of green public space</li> <li>• Access to affordable and safe housing</li> <li>• Music and entertainment venues within WE</li> <li>• Light rail running the length of Montague Road</li> <li>• Accessibility to city</li> </ul>	<ul style="list-style-type: none"> <li>• Lack of diversity as pricing of housing prohibits young people to live in WE.</li> </ul>
<b>Culture</b>	<ul style="list-style-type: none"> <li>• Diversity, multicultural – residents, businesses, identities “comfort” for visitors</li> <li>• Increased variety/opportunities/spaces to experience arts and cultural events.</li> <li>• Pop-up? Mixed use events in public parks?</li> <li>• Utilise warehouses and abandoned buildings</li> <li>• First Nations’ owned, meeting spaces, histories</li> <li>• Regular events – green bridges connecting this.</li> <li>• New art gallery – First Nations</li> <li>• Streetscape – public art – variety of mediums</li> <li>• ‘Boulevarding’ bridges too.</li> <li>• Outdoor cultural events “pop up” re flooding.</li> </ul>	<ul style="list-style-type: none"> <li>• What expense? Pop.</li> <li>• Lack of live music venues?</li> <li>• Limited/overcrowded to use green space for events?</li> <li>• Affordable housing to sustain diverse communities/liveability.</li> <li>• Traffic</li> <li>• Delivered, continuing First Nations presence, recognition is all tokenistic</li> <li>• Poor planning resulting in not embracing cultural perspectives/leadership.</li> </ul>

**Cai** is an 86 year-old widow. With her husband, Cai migrated to Brisbane from Vietnam in the late 70s. She owns three properties across the Peninsula. Cai increasingly relies on a wheelchair.

<b>By 2035</b>	<b>Cai - excites</b>	<b>Cai – concerns</b>
<b>Movement</b>	<ul style="list-style-type: none"> <li>• Accessibility: easy and safe</li> <li>• Community bus service (driverless?)</li> <li>• Access/legible/wayfinding</li> <li>• Inviting streetscape</li> <li>• River crossing 4101 - 4068</li> <li>• Footpath width, navigable, condition, unobstructed</li> <li>• Meandering pathways</li> </ul>	<ul style="list-style-type: none"> <li>• Increased speed, crossings, intersections in all directions, spacing and useability</li> <li>• Dependency on Montague</li> <li>• Disability access to river</li> <li>• Movement connections between 4101 hubs</li> <li>• Lack of disability parking</li> <li>• Flooding, traps</li> </ul>

	<ul style="list-style-type: none"> <li>• Access to parklands, river</li> <li>• Access to age appropriate care and independence</li> <li>• Charging stations</li> <li>• Green, shady</li> <li>• Rest stops</li> <li>• Excellent public transport.</li> <li>• North</li> <li>• T doesn't need to move – teens have great public transport, don't need to use the car very often</li> <li>• Smaller transport vehicles</li> <li>• More ferry stops! – at least two more stops</li> <li>• Specialised education – to accommodate children with different learning needs – and proper transport</li> <li>• Can walk or cycle to train station close by</li> <li>• Pedestrian friendly – primacy of pedestrian</li> <li>• New citycat stops – transform docks to citycat stop</li> <li>• Monorail – taking volume of traffic off road, improves safety for teens and access to work.</li> <li>• Shuttle buses – open roads around apartments, old 198 buses connect, hail and ride.</li> </ul>	<ul style="list-style-type: none"> <li>• Hilly paths</li> <li>• Congestion on footpaths</li> <li>• Invisibility of wheelchair operator</li> <li>• Lack of safe crossings</li> <li>• Lack of shady rest stops.</li> <li>• North</li> <li>• Travel to schools – transport and corridors, lack of bus connectivity</li> <li>• Lack of space for movement – exercise for teens</li> <li>• Montague Road has too much and is dangerous to walk around</li> <li>• Poor bike connectivity – too many trucks and cars – connections between river and Montague Road</li> <li>• Emergency vehicles – connectivity to apartments and down Montague Road</li> <li>• Affordability of transport</li> <li>• Too many cars in shopping centres – new centres</li> <li>• Too many cars – and poor connectivity of cars.</li> </ul>
<b>Culture</b>	<ul style="list-style-type: none"> <li>• Higher rent</li> <li>• Entertainment</li> <li>• Legacy</li> <li>• Rising land values</li> <li>• Opportunity for multicultural international growth</li> <li>• Survival of Vietnamese culture</li> <li>• Living in a mixed community</li> <li>• Improvements in connectivity</li> <li>• Access to green space</li> </ul>	<ul style="list-style-type: none"> <li>• Survival of Vietnamese culture</li> <li>• Mobility access</li> <li>• Increase in population</li> <li>• Security</li> <li>• Ease of movement</li> <li>• Resumption of properties</li> <li>• Rising rates</li> <li>• Affordable housing for future generations</li> <li>• Loss of character/unrecognisable since 70s.</li> <li>• Physical access for wheelchairs – mobility around the area</li> <li>• Access to medical services, local support groups.</li> </ul>

**Troy** is a mid-40's First Nations arts worker. He and his family of four rent an apartment. He is an avid cyclist.

By 2035	Troy - excites	Troy – concerns
<b>Work</b>	<ul style="list-style-type: none"> <li>• A new Indigenous Cultural Centre; cycling, meeting and selling work to tourists through grants funding</li> <li>• His family will grow up holding their culture confident in exchange with diverse groups</li> <li>• Space for Indigenous culture not hidden but out on the street</li> <li>• Mixed uses in one building</li> <li>• Recent development restricted to 5 storeys</li> <li>• Seeing community art on the street</li> <li>• Many affordable community arts spaces</li> <li>• Many workplace/job opportunities</li> <li>• Community gardens</li> <li>• Visibility and diversity of first nations culture represented in many businesses</li> <li>• Social enterprise – business investing in the community</li> <li>• Opportunities for young people to work, including part-time</li> <li>• Mixed use incorporating side-streets</li> <li>• Many small spaces and cafes where he can meet colleagues</li> <li>• Strong collaborative networks of arts/cultural workers</li> </ul>	<ul style="list-style-type: none"> <li>• Whether he will be able to remain in the neighbourhood as a tenant ie. Housing is affordable</li> <li>• Fears he will lose touch with street culture living in high-rise</li> <li>• Regrets loss of Black housing close to work and community</li> <li>• Fears for safety of cyclists and children</li> <li>• Road is getting increasingly busy – increasing threats to cyclists</li> <li>• Homogeneity of business and commercial enterprises</li> </ul>
<b>Greening and Caring for Country</b>	<ul style="list-style-type: none"> <li>• He can read the landscape that used to be in the area, endemic plants, medicinal and food</li> <li>• Using art to show/educate about the history or life (animals) which may not come back.</li> <li>• To stroll under shade cover.</li> <li>• To see the original custodians back and caring for country.</li> <li>• Can cycle to multiple meeting spaces</li> </ul>	<ul style="list-style-type: none"> <li>• No genuine public green spaces included in private development (especially apartments)</li> <li>• No space for trees/nature ecosystems between wall to wall density developments.</li> <li>• Heat island effect from density</li> <li>• Wind tunnels</li> <li>• Loss of natural habitat</li> <li>• Not enough space for cyclists and pedestrians</li> </ul>



	<ul style="list-style-type: none"> <li>• Snack tracks – incl bush tucker community garden</li> <li>• Reclaim the flood plain</li> <li>• Potential of Olympic Games site being a green space linked to South Bank.</li> <li>• Natural space on Olympic Games site.</li> </ul>	<ul style="list-style-type: none"> <li>• Loss of canopy cover</li> <li>• Lack of flood plain as John Oxley said keep 100 m each side</li> <li>• Car dominance</li> </ul>
--	------------------------------------------------------------------------------------------------------------------------------------------------------------------------------------------------------------------------------------------------------------------------------	--------------------------------------------------------------------------------------------------------------------------------------------------------------------------

**Mykal** is a venue manager living out at Carina. They have 2 children in child care and have to share the car. He works different shifts over a 7-day week and he's just been appointed manager of Souths Club at Davies Park.

By 2035	Mykal - excites	Mykal – concerns
Home	<ul style="list-style-type: none"> <li>• Being close to work</li> <li>• Better public transport</li> <li>• Energy of Davies Park as a hub</li> <li>• The Olympics</li> <li>• Growing diversity of sports interests</li> <li>• Living close to work</li> <li>• Very excited by school</li> <li>• Different uses of Davies Park, more diversity.</li> </ul>	<ul style="list-style-type: none"> <li>• Lack of housing affordability</li> <li>• Resident concerns about noise</li> <li>• Shortage of childcare for residents and workers</li> <li>• Post-Olympic “hangover”</li> <li>• Frequent flooding</li> <li>• Impacts of climate change by 2035</li> <li>• Poverty</li> <li>• Lack of adequate childcare</li> <li>• Shortage of family-size units</li> <li>• Housing affordability</li> <li>• Flooding</li> <li>• Transport and parking at venues</li> </ul>
Greening and Caring for Country	<ul style="list-style-type: none"> <li>• New library on new open space with playground beside (from Olympics media centre)</li> <li>• Quality childcare near Davies Park</li> <li>• Davies Park with its huge old trees still there, First Nations history brought to life, creating outdoor events, cultural and environmental</li> <li>• Playgrounds, outdoor cultural experiences, trees, skatepark, hover park.</li> <li>• Increased population as visitors to park venues</li> <li>• Can walk to Davies Park in shade along Montague Road.</li> </ul>	<ul style="list-style-type: none"> <li>• Over population so difficult to drive in and out – traffic</li> <li>• Demand for parking and pollution is a threat for trees</li> <li>• Floods and mitigation</li> <li>• That green space doesn't happen, trees gone, died from drought.</li> <li>• Night time safety, buses come on time</li> <li>• Not enough PT to get there still from eg Carina</li> <li>• Will our big trees survive the threats of heat cloud from concrete, poison and pollution?</li> <li>• Loss of architectural diversity of form.</li> </ul>



	<ul style="list-style-type: none"> <li>• Bring kids on weekends/holidays as events facilities for them</li> <li>• Can de-stress in park – need more large trees w native birds</li> <li>• Shady areas around Davies park for cooling</li> <li>• Heat islands are cooled</li> <li>• Promenade is shaded for lunch time work breaks</li> <li>• Davies park as venue for theatres and workshops</li> <li>• There are more parks!</li> <li>• Space for urban wildlife for kids to see and learn.</li> </ul>	
--	---------------------------------------------------------------------------------------------------------------------------------------------------------------------------------------------------------------------------------------------------------------------------------------------------------------------------------------------------------------------------------------------------------------------------------------------------------------------------------------------------------	--

**Celeste** is 55 years old and has lived in Kurilpa for the past 30 years. She is divorced, living off a pension, and is experiencing precarious housing.

By 2035	Celeste - excites	Celeste – concerns
<b>Work</b>	<ul style="list-style-type: none"> <li>• Mixed-uses: pharmacy, food, medical</li> <li>• Meets her social needs including pubs, cafes, cultural entertainment</li> <li>• Reduction in traffic</li> <li>• Pedestrian connectivity along river and Montague Road</li> <li>• Trees and vegetation</li> <li>• Possibility of part-time relevant work</li> <li>• Improvements in safety</li> <li>• Bridge to Toowong</li> </ul>	<ul style="list-style-type: none"> <li>• Lack of affordable housing</li> <li>• Lack of safety – theft and violence, unsafe for grandchildren</li> <li>• Cost of facilities??</li> <li>• Traffic – safety and amenity</li> <li>• Loss of employment opportunities</li> </ul>

## Appendix L - Forum World Café ideas collated by theme

By 2035	Excites	Concerns
<b>Move ment</b>	<ul style="list-style-type: none"> <li>• Accessibility: easy and safe</li> <li>• Community bus service (driverless?)</li> <li>• Access/legible/wayfinding</li> <li>• Inviting streetscape</li> <li>• River crossing 4101 - 4068</li> <li>• Footpath width, navigable, condition, unobstructed</li> <li>• Meandering pathways</li> <li>• Access to parklands, river</li> <li>• Access to age appropriate care and independence</li> <li>• Charging stations</li> <li>• Green, shady</li> <li>• Rest stops</li> <li>• Excellent public transport.</li> <li>• North</li> <li>• T doesn't need to move – teens have great public transport, don't need to use the car very often</li> <li>• Smaller transport vehicles</li> <li>• More ferry stops! – at least two more stops</li> <li>• Specialised education – to accommodate children with different learning needs – and proper transport</li> <li>• Can walk or cycle to train station close by</li> <li>• Pedestrian friendly – primacy of pedestrian</li> <li>• New citycat stops – transform docks to citycat stop</li> <li>• Monorail – taking volume of traffic off road, improves safety for teens and access to work.</li> <li>• Shuttle buses – open roads around apartments, old 198 buses connect, hail and ride.</li> </ul>	<ul style="list-style-type: none"> <li>• Increased speed, crossings, intersections in all directions, spacing and useability</li> <li>• Dependency on Montague</li> <li>• Disability access to river</li> <li>• Movement connections between 4101 hubs</li> <li>• Lack of disability parking</li> <li>• Flooding, traps</li> <li>• Hilly paths</li> <li>• Congestion on footpaths</li> <li>• Invisibility of wheelchair operator</li> <li>• Lack of safe crossings</li> <li>• Lack of shady rest stops.</li> <li>• North</li> <li>• Travel to schools – transport and corridors, lack of bus connectivity</li> <li>• Lack of space for movement – exercise for teens</li> <li>• Montague Road has too much and is dangerous to walk around</li> <li>• Poor bike connectivity – too many trucks and cars – connections between river and Montague Road</li> <li>• Emergency vehicles – connectivity to apartments and down Montague Road</li> <li>• Affordability of transport</li> <li>• Too many cars in shopping centres – new centres</li> <li>• Too many cars – and poor connectivity of cars.</li> </ul>

<b>Home</b>	<ul style="list-style-type: none"> <li>• Public space in new development</li> <li>• Views to the river via the buildings</li> <li>• Provide activities for residents apart from shopping</li> <li>• Make Montague Road a boulevard (pedestrian)</li> <li>• Establishment of service road</li> <li>• Genuine use of green public space</li> <li>• Access to affordable and safe housing</li> <li>• Music and entertainment venues within WE</li> <li>• Light rail running the length of Montague Road</li> <li>• Accessibility to city</li> <li>• Being close to work</li> <li>• Better public transport</li> <li>• Energy of Davies Park as a hub</li> <li>• The Olympics</li> <li>• Growing diversity of sports interests</li> <li>• Living close to work</li> <li>• Very excited by school</li> <li>• Different uses of Davies Park, more diversity.</li> </ul>	<ul style="list-style-type: none"> <li>• Demographic of the area</li> <li>• Safety of the children in the area</li> <li>• Apartments referred to as luxury</li> <li>• Lack of affordable housing</li> <li>• Lack of diversity as pricing of housing prohibits young people to live in WE.</li> <li>• Lack of housing affordability</li> <li>• Resident concerns about noise</li> <li>• Shortage of childcare for residents and workers</li> <li>• Post-Olympic “hangover”</li> <li>• Frequent flooding</li> <li>• Impacts of climate change by 2035</li> <li>• Poverty</li> <li>• Lack of adequate childcare</li> <li>• Shortage of family-size units</li> <li>• Housing affordability</li> <li>• Flooding</li> <li>• Transport and parking at venues</li> </ul>
<b>Culture</b>	<ul style="list-style-type: none"> <li>• Diversity, multicultural – residents, businesses, identities “comfort” for visitors</li> <li>• Increased variety/opportunities/spaces to experience arts and cultural events.</li> <li>• Pop-up? Mixed use events in public parks?</li> <li>• Utilise warehouses and abandoned buildings</li> <li>• First Nations’ owned, meeting spaces, histories</li> <li>• Regular events – green bridges connecting this.</li> <li>• New art gallery – First Nations</li> <li>• Streetscape – public art – variety of mediums</li> <li>• ‘Boulevarding’ bridges too.</li> <li>• Outdoor cultural events “pop up” re flooding.</li> <li>• Higher rent</li> <li>• Entertainment</li> <li>• Legacy</li> <li>• Rising land values</li> <li>• Opportunity for multicultural international growth</li> </ul>	<ul style="list-style-type: none"> <li>• What expense? Pop.</li> <li>• Lack of live music venues?</li> <li>• Limited/overcrowded to use green space for events?</li> <li>• Affordable housing to sustain diverse communities/liveability.</li> <li>• Traffic</li> <li>• Delivered, continuing First Nations presence, recognition is all tokenistic</li> <li>• Poor planning resulting in not embracing cultural perspectives/leadership.</li> <li>• Survival of Vietnamese culture</li> <li>• Mobility access</li> <li>• Increase in population</li> <li>• Security</li> <li>• Ease of movement</li> <li>• Resumption of properties</li> <li>• Rising rates</li> </ul>

	<ul style="list-style-type: none"> <li>• Survival of Vietnamese culture</li> <li>• Living in a mixed community</li> <li>• Improvements in connectivity</li> <li>• Access to green space</li> </ul>	<ul style="list-style-type: none"> <li>• Affordable housing for future generations</li> <li>• Loss of character/unrecognisable since 70s.</li> <li>• Physical access for wheelchairs – mobility around the area</li> <li>• Access to medical services, local support groups.</li> </ul>
<b>Work</b>	<ul style="list-style-type: none"> <li>• A new Indigenous Cultural Centre; cycling, meeting and selling work to tourists through grants funding</li> <li>• His family will grow up holding their culture confident in exchange with diverse groups</li> <li>• Space for Indigenous culture not hidden but out on the street</li> <li>• Mixed uses in one building</li> <li>• Recent development restricted to 5 storeys</li> <li>• Seeing community art on the street</li> <li>• Many affordable community arts spaces</li> <li>• Many workplace/job opportunities</li> <li>• Community gardens</li> <li>• Visibility and diversity of first nations culture represented in many businesses</li> <li>• Social enterprise – business investing in the community</li> <li>• Opportunities for young people to work, including part-time</li> <li>• Mixed use incorporating side-streets</li> <li>• Many small spaces and cafes where he can meet colleagues</li> <li>• Strong collaborative networks of arts/cultural workers</li> <li>• Mixed uses: pharmacy, food, medical</li> <li>• Meets her social needs including pubs, cafes, cultural entertainment</li> <li>• Reduction in traffic</li> <li>• Pedestrian connectivity along river and Montague Road</li> <li>• Trees and vegetation</li> <li>• Possibility of part-time relevant work</li> <li>• Improvements in safety</li> <li>• Bridge to Toowong</li> </ul>	<ul style="list-style-type: none"> <li>• Whether he will be able to remain in the neighbourhood as a tenant ie. Housing is affordable</li> <li>• Fears he will lose touch with street culture living in high-rise</li> <li>• Regrets loss of Black housing close to work and community</li> <li>• Fears for safety of cyclists and children</li> <li>• Road is getting increasingly busy – increasing threats to cyclists</li> <li>• Homogeneity of business and commercial enterprises</li> <li>• Lack of affordable housing</li> <li>• Lack of safety – theft and violence, unsafe for grandchildren</li> <li>• Cost of facilities ??</li> <li>• Traffic – safety and amenity</li> <li>• Loss of employment opportunities</li> </ul>

<b>Greening and Caring for Country</b>	<ul style="list-style-type: none"> <li>• He can read the landscape that used to be in the area, endemic plants, medicinal and food</li> <li>• Using art to show/educate about the history or life (animals) which may not come back.</li> <li>• To stroll under shade cover.</li> <li>• To see the original custodians back and caring for country.</li> <li>• Can cycle to multiple meeting spaces</li> <li>• Snack tracks – incl bush tucker community garden</li> <li>• Reclaim the flood plain</li> <li>• Potential of Olympic Games site being a green space linked to South Bank.</li> <li>• Natural space on Olympic Games site.</li> <li>• New library on new open space with playground beside (from Olympics media centre)</li> <li>• Quality childcare near Davies Park</li> <li>• Davies Park with its huge old trees still there, First Nations history brought to life, creating outdoor events, cultural and environmental</li> <li>• Playgrounds, outdoor cultural experiences, trees, skatepark, hover park.</li> <li>• Increased population as visitors to park venues</li> <li>• Can walk to Davies Park in shade along Montague Road.</li> <li>• Bring kids on weekends/holidays as events facilities for them</li> <li>• Can de-stress in park – need more large trees w native birds</li> <li>• Shady areas around Davies park for cooling</li> <li>• Heat islands are cooled</li> <li>• Promenade is shaded for lunch time work breaks</li> <li>• Davies park as venue for theatres and workshops</li> <li>• There are more parks!</li> <li>• Space for urban wildlife for kids to see and learn.</li> </ul>	<ul style="list-style-type: none"> <li>• No genuine public green spaces included in private development (especially apartments)</li> <li>• No space for trees/nature ecosystems between wall to wall density developments.</li> <li>• Heat island effect from density</li> <li>• Wind tunnels</li> <li>• Loss of natural habitat</li> <li>• Not enough space for cyclists and pedestrians</li> <li>• Loss of canopy cover</li> <li>• Lack of flood plain as John Oxley said keep 100 m each side</li> <li>• Car dominance</li> <li>• Over population so difficult to drive in and out – traffic</li> <li>• Demand for parking and pollution is a threat for trees</li> <li>• Floods and mitigation</li> <li>• That green space doesn't happen, trees gone, died from drought.</li> <li>• Night time safety, buses come on time</li> <li>• Not enough PT to get there still from eg Carina</li> <li>• Will our big trees survive the threats of heat cloud from concrete, poison and pollution?</li> <li>• Loss of architectural diversity of form.</li> </ul>
----------------------------------------	-------------------------------------------------------------------------------------------------------------------------------------------------------------------------------------------------------------------------------------------------------------------------------------------------------------------------------------------------------------------------------------------------------------------------------------------------------------------------------------------------------------------------------------------------------------------------------------------------------------------------------------------------------------------------------------------------------------------------------------------------------------------------------------------------------------------------------------------------------------------------------------------------------------------------------------------------------------------------------------------------------------------------------------------------------------------------------------------------------------------------------------------------------------------------------------------------------------------------------------------------------------------------------------------------------------------------------------------------------------------------------------------------------------------------------------------------------------------------------------------------------------------------------------------------------------------------------------------------------------------------------------	---------------------------------------------------------------------------------------------------------------------------------------------------------------------------------------------------------------------------------------------------------------------------------------------------------------------------------------------------------------------------------------------------------------------------------------------------------------------------------------------------------------------------------------------------------------------------------------------------------------------------------------------------------------------------------------------------------------------------------------------------------------------------------------------------------------------------------------------------------------------------------------------------------------------------------------------------------------------------------------------------------------------------------------------------------------

## Appendix M - Forum Scenarios by Theme

(verbatim from flip chart paper)

	Linkages	Hubs	Highlights
<b>Community</b>	<p>Values driven - resilient, local, active, outdoors, First Nations, business, multicultural, healthy</p> <p>Places - safe, quality, availability, connected, scales, for groups, just housing for all, land back to First Nations, diverse.</p> <p>Demography - all ages, diversity, migrants, affordable</p> <p>Informs services - are local, adequate, available essential services.</p> <p>Groups - church, sports, arts, street level, online.</p>		
<b>Greening and Caring for Country</b>	<p>more people, southbank, to the river, new ferry stop, to green Olympic site.</p> <p>Connections across Montague and across river via bridge.</p>	<p>Montague Road Ladder</p> <p>Road closed to heavy vehicles and cars but not PT: Green space, walkability, art work, dog off leash, families, wildlife, foodmarket, reclaim flood plain.</p>	<p>Asphalt removal opportunities for more trees.</p> <p>Arch shaped canopy trees, overhanging, bikeway, wide footpath. People can sit under trees in shade along the road.</p> <p>Temporary buildings.</p>
<b>Climate</b>	<p>River and Montague Road as key links</p> <p>Parking Strategy</p> <p>Snack track</p> <p>Dense planting for shade all along Montague Road</p> <p>Walk safely from cars and sun</p> <p>Creative community art shade solutions for shade down Montague Road</p>	<p>Reduce building footprints</p> <p>Water storage across roof spaces for gravity flow for re-use - to slow down water flow and reduce run off in heavy rain events and store for droughts.</p> <p>Green roofs above layer of roof water storage</p> <p>Resilient energy including utilities above flood levels</p> <p>Dense planting of Harpulas on glass factory site</p> <p>Montague Markets as hub</p> <p>(International) climate change refuge(e) hu</p>	<p>Climate adaptation as overall driver and framework for everything going forward around Montague Road</p> <p>Brisbane model for climate change adaptation and how to achieve 43% emissions reduction by 2030 – water, energy, amenity and mobility as focus.</p> <p>It was suggested we could form a climate skills group to resource the Project going forward, maybe each of the possible pillars.</p>
<b>Movement</b>	<p>Public transport, walk, cars – rental cars eg. Go Get</p>	<p>Heritage-listed buildings, including Cultural Centre, GOMA – arts and crafts</p> <p>Reclaim all old buildings</p>	NA

	<p>Inner circle – parking around , minibus, electric cars</p> <p>Entertainment brings people</p> <p>People don't go north – south</p> <p>Gold Coast light rail</p> <p>Free transport</p> <p>Laneways so as not to go on main road</p> <p>No cycles on Montague Road</p> <p>More ferry terminals</p> <p>Smaller and more frequent buses</p> <p>River transport – tunnel under river from outer suburbs</p> <p>Vehicular bridge</p>	<p>Limit to 7-11 storeys</p> <p>Boulevard</p> <p>Davies Park – sporting and green space hub</p> <p>Markets (come without cars)</p> <p>Dog park</p>	
<b>Home</b>	<p>Housing for older people and social housing – rent to buy scheme and allocated social housing</p> <ul style="list-style-type: none"> <li>- Access to food, supermarket, garden shop, local hardware and coffee shops</li> <li>- Transport</li> <li>- Child-care in relation with elder care.</li> </ul>	<p>Living close</p> <p>Parks with gardens, food, trees and children's playgrounds</p> <p>Affordable Housing</p> <p>Multigenerational housing with rent-to-buy portion of units – allocation of social housing/apartments – accessible to services.</p> <p>Olympic village.</p>	<p>Ferry terminals and pedestrian access to these</p> <p>Where do cars go?</p> <p>More bus lines, bus stops and "hail and ride". Electric buses</p> <p>Shared autonomous cars attached to housing complexes</p> <p>More frequent and better public transport – ferry terminals</p> <p>Pedestrian</p> <p>Shared autonomous cars.</p>

## Appendix N – Forum ‘Exemplars’ Final Synthesis Group Work

(verbatim from flip chart paper)

### ***Greening and Caring for Country***

- Southbank 2 – focus on people, food forest and claiming flood plains.
- 50% representation of First Nations on Corporation No.2?
- Climatic change - net zero outcome.

### ***Free and Easy Public Transport***

- Trams along Montague Road
- No cars; specialised parking
- bike and scooter primacy
- over-passes across Montague Road for bikes, pedestrians and animals, eg highline in NYC
- native grasses; dig up road; delivery by tram; local food production.

### ***Climate***

An overall driver and framework for everything going forward around Montague Road to serve as a Brisbane model for climate change adaptation and how to achieve 43% emissions reduction by 2030. We could form a climate skills resource working group.

- Montague Road Canopy - large trees down the middle of the road, dense and wide to shade both footpaths for safe-from-sun walking
- Resilient Home design
- Utilities stay dry above floods
- Water storage across roof spaces for gravity flow for re-use - to slow down water run off in heavy rain events and store for droughts.
- Green roofs above layer of roof water storage
- Reduce building footprints
- reduces heat island effect by 5 degrees
- Benefits
- reduction in energy load
- realises economic benefit in energy savings
- Less rebuilding after climate disasters
- International interpretation.



## ***Culture***

- Cultural change with mode of transport ??
- The most fascinating street culture; viewing of street
- Rules to allow cultural development
- Affordable housing is critical - 10% in all development
- Strengthen community voice
- Get cars off Montague Road – active transport
- Visitors to public spaces don't come by cars
- Master Plan for the northern industrial land/sites to include significant community cultural facilities

## ***Education***

- Opportunity for new school at Kurilpa Point
- Early childhood - easy to get to for parents
- Student population – can't get out of alignment with available facilities.
- Safe, active travel for students

## ***Two separate sheets not under themes:***

### ***Transforming Montague Road***

- Boulevard-style section (car free zones)
- Priority to pedestrians and active transport
- shade trees, greenery, seating, urban farms
- Inclusive space - safe for kids, entertainment, community activities
- Think 'European' city squares, lanes, boulevards
- North Road section

### ***Real Action: Kurilpa Boulevard (new name?)***

- Distillation group for action plan
- Re-brand, re-vision as exemplar for inner city development
- check current budget for Indigenous Art Centre - pitch!!
- Re-use current / historical building/resources
- Diversity/affordable housing model site - (Common Ground)

## Summary from the floor with reporting back

Intention	Flesh on the bones
<b>“South Bank 2” People and Nature</b>	<ul style="list-style-type: none"> <li>• People, food forest and revegetation – claiming back flood plain</li> <li>• 50% First Nations representation on board</li> <li>• Net-0 emissions</li> </ul>
<b><i>Free and easy public transport</i></b>	<ul style="list-style-type: none"> <li>• Specialised parking but mostly no parking</li> <li>• Overpass/highline for food, gardens</li> <li>• Nature corridors</li> <li>• Tram along Montague Road</li> </ul>
<b>Boulevard – car free section</b>	<ul style="list-style-type: none"> <li>• Active transport</li> <li>• Community square – Melbourne Street example</li> <li>• Urban farms</li> <li>• Community activities</li> </ul>
<b>Montague Canopy – climate focus</b>	<ul style="list-style-type: none"> <li>• Montague Road to be a model for responding to climate</li> <li>• Recycled water for gardens from rooftop storage to slow water flow in floods and provide water in droughts</li> <li>• Focus on shade</li> <li>• Economic benefits – circular funding, revenue-raising to fund the space</li> </ul>
<b>Education Access (vision of now)</b>	<ul style="list-style-type: none"> <li>• Lights in front of Queensland Ballet</li> <li>• Police to reduce hooning on Montague Road</li> </ul>
<b>Kurilpa Boulevard – a new name for Montague Road</b>	<ul style="list-style-type: none"> <li>• Proper consultation with First Nations</li> <li>• First Nations Arts Centre – revisit community funding pitch/source</li> <li>• Reuse current buildings</li> <li>• Diverse and affordable housing model in Common</li> <li>• Ground, South Brisbane</li> </ul>

## Appendix O – Big Ideas submitted to Inner Spark

These are the two Inner Spark Big Ideas Submitted to Brisbane City Council on 25 September 2022 from the Forum Data.

### Number 1: Big Idea for Inner Spark

Montague Road becomes a citywide exemplar for climate change adaptation and how to achieve 43% emissions reduction by 2030.

#### Idea Origin

This idea has come from a community-initiated visioning process facilitated by the Montague Road Project. Following on from our Community Survey in which over 750 people participated, 60 locals participated in a day-long Community Forum on Sunday 11 September 2022 where this idea was developed as pictured.



#### Idea in a nutshell

The idea is to use climate adaptation as the overall driver for everything we do going forward for the length of the Montague Road precinct. It offers opportunities for greenfield sites as well as to solve citywide issues of already developed sites, including houses and apartments, old and new. The 2032 Olympics would enable us to showcase to the world Australian expertise and our three levels of governments' commitment to climate change adaption.

#### Key opportunities

1. To use blue and green infrastructure to:
  - Proactively manage storm water flows in heavy rain periods
  - To cool heat islands by five degrees
2. To achieve 43% emissions reduction by 2030
3. To demonstrate the economic benefits
4. To provide a signature climate resilient destination.

#### Key Elements:

1. Montague Road Canopy
  - Large trees down the middle of the road, dense and wide to shade both footpaths for safe-from-sun walking and cycling
  - Complement dense planting with innovative shading solutions, eg the weavers from a small town in Spain using recycled materials to create creative canopies.
2. Resilient home and building design
3. Critical utilities stay dry above floods
4. Water storage across roof spaces for re-use and to slow down water run-off in heavy rain events
5. Green roofs, or alternatively green walls
6. Reduce building footprints to enable more public open space and green space (blurring the front boundary line)
7. Transport infrastructure encouraging reduced vehicle use complemented by alternative active and energy efficient transport options
8. Disaster refuge hub and/or climate refuge hub.

**Benefits**

1. Reduction in energy load
2. Mitigated impacts due to urban heat islands – a reduction in the urban thermal comfort index by up to 5 degrees
3. Reduction in water demand and stormwater runoff improving local flood outcomes
4. Realises economic benefit in energy and water savings, improved health, reduced disaster recovery costs and uplift in building values
5. Less rebuilding and disruption resulting from extreme weather events
6. International interpretation and reputation.

## Number 2 Big Idea for Inner Spark

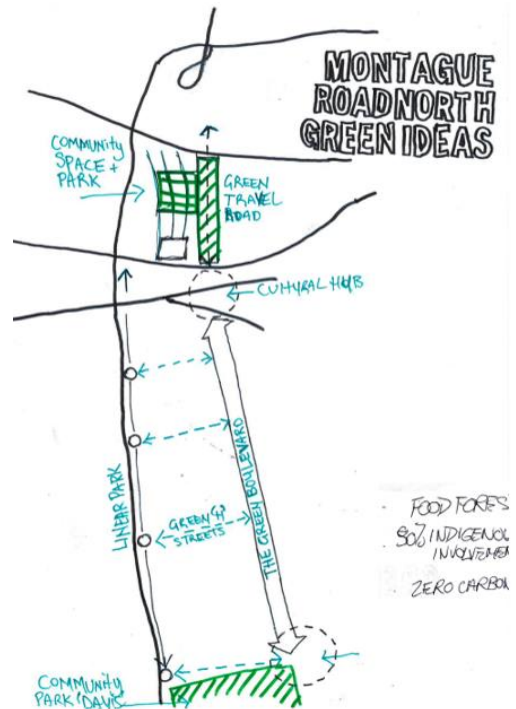
Montague Road is transformed into 'Kurilpa Boulevard' as part of a 'Green Ladder' with the riverside parklands and side streets as 'rungs'.

### Idea Origin

This idea has come from a community-initiated visioning process facilitated by the Montague Road Project. Following on from our Community Survey in which over 750 people participated, 60 locals participated in a day-long Community Forum on Sunday 11 September 2022 where this idea was developed as pictured.

### Idea in a nutshell

The idea is to create a welcoming meandering and wayfinding experience for local communities and visitors alike by greening and caring for country, guided by local First Nations and local community. It will be an exemplar of inclusive inner city design for carbon zero living. Green space is where people gather safely to enjoy nature, the locality and facilities it offers.



### Key opportunities

- 2) To learn how to care for country with local First Nations leadership
- 3) To contribute to restoring the open space deficit in Brisbane to better position us among Australia's capital cities
- 4) To contribute to Kurilpa achieving 43% emissions reduction by 2030
- 5) To show the health and economic benefits of greening and caring for country
- 6) To provide a signature climate resilient destination.

### Key Elements:

1. The length of Montague Road is transformed into a 'Green Road', Kurilpa Boulevard, which connects to riverside parklands via 'Green' side streets. So, these side streets are the rungs of the 'ladder'.
2. Dense planting of street shade trees for sun and heat protection
3. Arch shaped canopy trees, overhanging, bikeway, wide footpaths.
4. Asphalt removal opportunities for more trees, less straight lines.
5. Seating for people to gather under shade trees along the road.
6. A section is closed to heavy vehicles and cars but not public transport
7. First Nations culture is visible out on the street, including new First Nations Cultural Centre
8. Fairy lights in street trees all the way down Kurilpa Boulevard
9. There are more parks and green space with food forests
10. Can read the landscape that used to be in the area, endemic plants, medicinal and food; using art to show history and extinct species.
11. Snack tracks – including bush tucker community garden.

### Benefits

More green space, space for wildlife, walkability, artwork, dog off leash, space for families, food market and reclaims flood plain.